



Chemical Abstracts Service
provides access to
STN in North America

January/February 2005

STN News

CODEN: STNWEQ ISSN: 1040-1229 Vol. 21 No. 1

North American Edition

STN[®]



Highlights

- 2** CSA databases on STN—
Opening the world
of computing, engineering,
materials science,
and water, air, earth,
and life sciences
- 11** New databases on STN:
EPFULL and LISA
- 16** SET it right
- 18** Accessing additional
data through hyperlinked
terms
- 21** Searching German patents



Opening the world of computing, engineering, materials science, and water, air, earth, and life sciences

STN[®]

As an information professional, you realize that the outcome of your work ultimately depends on the quality of the source information. Results depend on accurate, timely, and relevant information, and reliable access to this information is critical. STN provides access to over 200 sci-tech databases, including 27 targeted databases produced by Cambridge Scientific Abstracts (CSA).

As the only information service provider, besides CSA, providing access to the CSA databases, STN offers the unique ability to search the databases on a pay-as-you-go basis as well as conduct multi-file searches consisting of some of the CSA databases as well as other complementary databases on STN, e.g., CAPlusSM, INSPEC, MEDLINE[®], WPIDS/WPINDEX/WPIX.

STN provides access to over 200 sci-tech databases, including 27 targeted databases produced by Cambridge Scientific Abstracts (CSA).

STN's growing collection of CSA databases

In 2004, eight new CSA-produced databases were added to STN—ANTE, AQUALINE, BIOENG, CIVILENG, ENVIROENG, LISA, MECHENG, and WATER—and four were reloaded—CERAB, COMPUAB, ELCOM, and SOLIDSTATE. These additions greatly expand the coverage of biotechnology and bioengineering, civil and structural engineering, environmental engineering, mechanical and transportation engineering, new technologies, and water resources topics on STN.

Sci-tech topics covered in the CSA databases

For 30 years, CSA databases have covered a variety of scientific and technological topics, including aerospace, agriculture, aquatic, biological and medical, computer, engineering, earth and environmental, materials, and life sciences.

CSA databases also cover information on major areas of safety—general, environmental, industrial, occupational, transportation, aviation and aerospace, and medical—and provide an international research resource for scientific and technical conferences touching on engineering, life, and physical sciences.

For more details about each CSA database mentioned in this article, refer to the chart on page 8 and 9 in this issue of *STNews* or the specific database summary sheet.

Aerospace sciences

The CSA databases provide extensive information regarding aerospace and related sciences, including published literature, as well as technological, safety, and conference information.

These databases cover aviation, computer sciences, space studies, atmospheric science, and more. The databases provide an ideal source for scientists and engineers from industry, government, and academia to access the scientific knowledge of human flight. You may also use these databases to improve the design of aerospace systems, including aircraft and aircraft engines.

The most important database in this category is AEROSPACE which contains about 2.5 million records on literature published in more than 100 countries.

Other CSA databases that cover aerospace sciences include:

- ANTE
- CONFSCI
- HEALSAFE

**In 2004, eight new CSA-produced databases were added to STN—
ANTE, AQUALINE, BIOENG, CIVILENG, ENVIROENG, LISA, MECHENG, and WATER—
and four were reloaded—
CERAB, COMPUAB, ELCOM, and SOLIDSTATE.**

An aerospace record outlining the planet Saturn's FUV aurora as measured by Voyager and the Hubble Space Telescope.

```
L1 ANSWER 1 OF 6147 AEROSPACE COPYRIGHT 2005 CSA on STN
Full Text
AN 2005:005980 AEROSPACE
DN A05-15980
TI Characteristics of Saturn's FUV aurora observed with the
Space Telescope Imaging Spectrograph
AU Gerard, Jean-Claude, (Laboratoire de Physique
Atmospherique et Planetaire, Universite de Liege, Liege,
Belgium); Grodent, Denis,; Gustin, Jacques,; Saglam,
Adem,; Clarke, John T,; Trauger, John T,
SO Journal of Geophysical Research. A. Space Physics, (Sep
2004) vol. 109, no. A925Part lue 2004: OCCAR. American
Geophysical Union. Available from: Aeroplus Dispatch.
ISSN: 0148-0227
CY OF
DT Journal
LA English
AB We analyze a set of 15 FUV images obtained between
October 1997 and January 2001 with the Hubble Space
Telescope Imaging Spectrograph (STIS), providing a good
view of Saturn's south auroral oval. It is found that the
.
.
.
morning arc is somewhat lower than model predictions
based on the plasma flow velocity measured by Voyager in
the middle magnetosphere.
CT *FAR ULTRAVIOLET RADIATION; *AURORAS; *SATURN; *HUBBLE
SPACE TELESCOPE; *IMAGE ANALYSIS; *SPECTROGRAPHS;
*IMAGING SPECTROMETERS; *BRIGHTNESS DISTRIBUTION;
*MORPHOLOGY; *ULTRAVIOLET EMISSION; *MORNING;
*BRIGHTNESS; *NOON; *SOLAR ACTIVITY; *CUSPS; *BOUNDARIES;
*COROTATION; *ELECTRON ENERGY; *THRESHOLDS; *ATMOSPHERES;
PROPERTIES
```

Aquatic sciences

Water is a life source. CSA produces databases that cover anything related to water, the sea, and beyond. While the databases cover everything aquatic, they are also great resources for water resource engineering and management, as well as the socioeconomic aspects of water-related issues. Aquatic science provides the foundation for conservation, management and safety aspects of waters and waterways. Utilize these databases to research resource requirements, particularly in terms of scientific specialties, and the methods which will best serve the public.

The most comprehensive database in this cluster is WATER containing about 5 million records.

Some of the CSA databases that cover aquatic sciences include:

- AQUALINE
- AQUASCI
- OCEAN

Depending on your question, you may find additional answers in:

- ANTE
- ENVIROENG
- CIVILENG
- POLLUAB
- CONFSCI

CSA aquatic databases are great resources for water resource engineering and management, as well as the socioeconomic aspects of water-related issues.

An aquatic sciences-related record illustrating the affects of Pacific storms, El Nino, and tsunamis on sand deposits.

```
L3 ANSWER 5 OF 120 WATER COPYRIGHT 2005 CSA on STN
Full Text
AN 2004381555 WATER
DN 5274408
TI Pacific Storms, El Nino and Tsunamis: Competing Mechanisms
for Sand Deposition in a Coastal Marsh, Euchre Creek,
Oregon
AU Witter, RC; Kelsey, HM; Hemphill-Haley, E
CS William Lettis & Associates, Inc., 1777 Botelho Drive,
Suite 262, Walnut
Creek, CA 94596, USA
SO Journal of Coastal Research [J. Coast. Res.]. Vol. 17, no.
3, pp. 563-583. 2001.
ISSN: 0749-0208
DT Journal
LA English
SL English
OS Meteorological & Geostrophysical Abstracts; Oceanic
Abstracts; ASFA 2: Ocean Technology Policy & Non-Living
Resources
AB During the past 600 years, 4 well-sorted sand beds, each
with abrupt lower contacts, were deposited in the Euchre
Creek marsh by storm waves and a tsunami. Brackish-marine
.
.
.
response to the seismic cycle predicts that lower runup
elevations were necessary for marine inundation of the
marsh at times during the past 600 years due to coseismic
subsidence.
CC 0870 Erosion and sedimentation
CT USA, Oregon; Coasts; Marshes; Sand; Deposition; Storms;
Tsunamis; Wave Runup; Seismic Waves; Sea Level; Model
Studies; Sediment transport under wave action; Historic
El Nino events; Coastal geomorphology; El Nino phenomena;
Sediment transport; Sedimentation; Coastal morphology;
Geomorphology; Salt marshes; Sea level changes; Long-term
changes; INE, Pacific; INE, USA, Oregon; INE, USA,
Oregon, Euchre Creek
UT Diatoms
```

Earth and environmental sciences

CSA databases provide comprehensive coverage of the earth and environmental sciences. These databases provide information about atmosphere, emissions, oceanography, life sciences, mathematical models, health and safety, effects on people and animals, population, all forms of pollution, including air, soil, water, noise, plus hazardous and radioactive pollution, and environmental action in response to global issues.

Some of the CSA databases that cover the earth and environmental sciences include:

- AQUALINE
- AQUASCI
- CONFSCI
- ENVIROENG
- HEALSAFE
- LIFESCI
- OCEAN
- POLLUAB
- WATER

Biological and medical sciences

Biomedical sciences and research provide a cornerstone to our well-being. CSA produces several databases that comprehensively cover new technologies, life sciences, bioengineering, and health and safety issues. These databases also include information on marine sciences.

LIFESCI covers recent worldwide literature in major areas of biology, medicine, biochemistry, ecology, and microbiology.

Additional CSA databases that cover the biological and medical sciences include:

- AQUALINE
- AQUASCI
- BIOENG
- CONFSCI
- ENVIROENG
- HEALSAFE
- LIFESCI
- OCEAN
- POLLUAB
- WATER

A study relating to earth and environmental sciences presenting the recent developments in the bioremediation of PCBs.

```
L9 ANSWER 257 OF 664 ENVIROENG COPYRIGHT 2005 CSA on STN
Full Text
AN 2004113798 ENVIROENG
DN 5335025
TI Recent developments in bioremediation of PCBs in
dredged material
AU Myers, TE
CS Engineer Research & Development Center, 3909 Halls
Ferry Road, Vicksburg, MS 39180, USA
SO Abstracts from the 44th Conference on Great Lakes
Research, June 10-14, 2001. Great Lakes Science: Making
.
.
.
OS Water Resources Abstracts; Pollution Abstracts;
Environmental Engineering Abstracts
AB Laboratory mesocosm studies on one freshwater and one
estuarine sediment showed significant reduction of
polychlorinated biphenyl (PCB) concentrations after
simulated land treatment. Mesocosm results for the
.
.
.
CC 40 Water Pollution: Monitoring, Control & Remediation
CT USA, Michigan, Saginaw; USA, Wisconsin, Green Bay; USA,
Michigan L.; Bioremediation; Dredging; Sediment
.
.
.
```

A biological and medical sciences record reporting genetic predisposition and its affect on appetite, obesity, and metabolism.

```
L4 ANSWER 1 OF 63 LIFESCI COPYRIGHT 2005 CSA on STN
Full Text
AN 2005:4646 LIFESCI
TI NPY and cohorts in regulating appetite, obesity and
metabolic syndrome: beneficial effects of gene therapy
AU Kalra, S.P.; Kalra, P.S.
CS Department of Neuroscience, University of Florida,
McKnight Brain Institute, P.O. Box 100244, Gainesville,
FL 32610, USA; E-mail: skalra@mbi.ufl.edu
SO Neuropeptides, (20040800) vol. 38, no. 4, pp. 201-211.
ISSN: 0143-4179.
DT Journal
TC General Review
FS N3
LA English
SL English
AB Neuropeptide Y is the most potent physiological appetite
transducer known. The NPY network is the conductor of the
.
.
.
thus shows promise as a newer treatment modality to curb
the pandemic of obesity and metabolic syndrome.
CC 11075 Molecular neurobiology
UT Obesity; Signal transduction; Hyperphagia; Appetite;
.
.
.
```

Engineering specialties

This collection of databases summarizes the worldwide literature in engineering management, production, and applied computer science, as well as civil, biotechnology, and mechanical engineering.

Some of the CSA databases that cover the engineering fields include:

- ANTE
- ENVIROENG
- AQUASCI
- HEALSAFE
- BIOENG
- MECHENG
- CERAB
- OCEAN
- CIVILENG
- POLLUAB
- COMPUAB
- WATER
- ELCOM

Computer technology and telecommunications

Computer technology propels our every day lives. These databases cover technologies such as computing, electronics systems and circuits, communications, aerospace research and development, library and information services, civil, mechanical and transportation engineering, and biotechnology and medical technology.

Some of the CSA databases that cover computer technology and telecommunications include:

- ANTE
- ELCOM
- CIVILENG
- MECHENG
- COMPUAB

Additional information may also be found in:

- AEROSPACE
- LISA

An engineering record emphasizing the importance of design in railway systems, specifically for the bullet train.

```
L10 ANSWER 1 OF 11 CIVILENG COPYRIGHT 2005 CSA on STN
Full Text
AN 2004385314 CIVILENG
DN 200411-52-00963
TI Development of an ER bypass damper for railway car
relief couplers
AU Wang, F; Tanaka, M; Nakada, N; Hayase, T; Chonan, S
CS Tohoku University
SO International Journal of Applied Electromagnetics and
Mechanics. Vol. 19, no. 1-4, pp. 269-274. 2004, Graphs,
5 ref. Published by: IOS Press, Inc , Nieuwe Hemweg 6B,
Amsterdam, 1013 BG, Netherlands, [mailto:market@ios.nl]
ISSN: 1383-5416
DT Journal
LA English
OS Mechanical & Transportation Engineering (MT);
Electronics & Communication (EA); Solid State &
Superconductivity (SO)
AB This paper is a study on the development of an active
damper for the couplers of railway cars using
electrorheological (ER) fluid as a functional material
with the purpose of lowering the coupler force between
a relief and a failed train set, which is a very
.
.
.
.
CC 52 Railways and Mass Transit
CT Fluid Dynamics; Dampers; Fluid Flow; Fluids; Bypasses;
Couplers; Buffers; Trains; Railway Engineering;
Electric Fields; Hydraulics; Active Damping;
Proportional Control; Control Valves
```

A computer technology-related record discussing the possibilities of electronic waste and the hazardous side effects of dumping technology into landfills.

```
L8 ANSWER 1 OF 3 ANTE COPYRIGHT 2005 CSA on STN
Full Text
AN 2004328689 ANTE
DN 97979
TI Are old PCs poisoning us?
AU Alster, N; Echikson, W
SO Business Week , pp. 68, 70-1. 12 June 2000, il.
ISSN: 0007-7135
DT Journal
LA English
AB Increasingly, US landfill and incinerator facilities are
the last stop for electronic waste. But computers, cell
phones, TVs, and other electronic equipment are laden
with toxins that can leach into groundwater or produce
dioxins and other carcinogens when burned. The problem,
.
.
.
The actions taken in Europe could well influence the course
of events in the US. (Abstract quotes from original text)
CT Waste Electronic Equipment; Health Hazards
```

CSA databases cover technologies such as computing, electronics systems and circuits, communications, aerospace research and development, library and information services, civil, mechanical and transportation engineering, and biotechnology and medical technology.

Materials science

CSA provides extensive information in the materials science area. The databases cover aerospace research and development, aluminum, copper, copper alloys, general corrosion sciences, and engineered materials such as ceramics, composites, plastics, polymeric materials, iron and steel, and non-ferrous metals, as well as information on welding processes.

Some of the CSA databases that cover materials science include:

- AEROSPACE
- ALUMINIUM
- CERAB
- COPPERLIT
- COMPUAB
- CONFSCI
- CORROSION
- EMA
- MATBUS
- MDF
- METADEX
- SOLIDSTATE
- WELDASEARCH

A materials science record determining the flow of radioactivity within a kiln.

L11 ANSWER 5000 OF 6636 CERAB COPYRIGHT 2005 Cambridge Scientific Abstracts on STN

Full Text

AN 1983:4609 CERAB

DN CA6203587 (WC)

TI Determination of flow parameters of glassmelting tank kilns by radioactive tracing

SO Epitoanyag. Vol. 35, no. N-2, pp. 41-51. 1983. ISSN: 0013-970X

DT Journal; Article; (Journal Article)

FS Ceramic Abstracts/World Ceramics

LA Hungarian

ED Entered STN: 20041219

Last Updated on STN: 20041219

AB The planning, organization, and data evaluation of the title method are described. 1 4 0 La was used as tracer and its movement studied by 16 detectors (10 sampling places in the kiln, 6 at the drawing machine). Intensity vs time functions were data processed to obtain characteristic parameters of kiln operation. In the example given, the avg flow velocity and avg hold time of the melt were 3.16 m/h and 159.9 h, resp., the inactive vol of the kiln 168.7 m³, and efficiency 79.9%. The changes between top and bottom, as well as right and left side flow, were determined.

CC Glass (WC)

CT Furnaces; Flow; Radioactive Tracers

ET La

Additional Resources

For additional information about the CSA databases on STN:

- Visit: www.cas.org/ONLINE/DBSS/dbsslist.html
- View a pre-recorded CAS e-Seminar and download the associated materials, at: casevents.webex.com/casevents/onstage/tool/record/viewrecording1.php?EventID=277071877
- Contact your local STN Service Center

CSA databases on STN

Database name on STN	Full name for database	Coverage	Update frequency	Current-awareness alert (SDI) frequency
AEROSPACE	Aerospace and High Technology Database	Aerospace research and development	Monthly	Monthly
ALUMINIUM	Aluminium Industry Abstracts (AIA)	Aluminum industry	Monthly	Monthly
ANTE	Abstracts in New Technologies and Engineering	New technologies and engineering	Monthly	Monthly
AQUALINE	Aqualine	Water resources and hydrological cycle data	Monthly	Monthly
AQUASCI	Aquatic Sciences and Fisheries Abstracts	Marine science	Monthly	Monthly
BIOENG	Biotechnology and Bioengineering Abstracts	Biotechnology information	Monthly	Monthly
CERAB	Ceramic Abstracts	Ceramics	Monthly	Monthly
CIVILENG	Civil Engineering Abstracts	Civil engineering literature	Every 2 weeks	Every 2 weeks; monthly
COMPUAB	Computer and Information Systems Abstracts	Computers and information systems	Monthly	Monthly
CONFSCI	Conference Papers Index	Multidisciplinary conference and meeting papers	Every 2 months	Every 2 months
COPPERLIT	Copper Data Center Database	Copper, copper alloys, and copper technology	Monthly	Monthly
CORROSION	Corrosion Abstracts	Corrosion science and engineering	Every 2 months	Every 2 months
ELCOM	Electronics and Communications Abstracts	Electronic systems and circuits and communications	Monthly	Not available
EMA	Engineered Materials Abstracts	Materials science	Monthly	Monthly

CSA databases on STN

Database name on STN	Full name for database	Coverage	Update frequency	Current-awareness alert (SDI) frequency
ENVIROENG	Environmental Engineering Abstracts	Environmental engineering information	Monthly	Monthly
HEALSAFE	Health and Safety Science Abstracts	Health and safety	Monthly	Monthly
LIFESCI	Life Sciences Collection	Agriculture, life sciences, and veterinary science	Monthly	Monthly
LISA	Library and Information Science Abstracts	Librarianship and information sciences	Every 2 weeks	Every 2 weeks; monthly
MATBUS	Materials Business	Applications for iron, steel, non-ferrous metals, and engineering materials	Monthly	Monthly
MDF	Metals DataFile	Property data for ferrous and nonferrous alloys	Not available	Not available
MECHENG	Mechanical and Transportation Engineering Abstracts	Mechanical and transportation engineering	Every 2 weeks	Every 2 weeks; monthly
METADEX	Metals Abstracts/Alloy Index	Metallurgy and materials	Monthly	Monthly
OCEAN	Oceanic Abstracts	Oceanography and marine biology	Monthly	Monthly
POLLUAB	Pollution Abstracts	Pollution	Monthly	Monthly
SOLIDSTATE	Solid State and Superconductivity Abstracts	Solid state studies of metallic, plastic, and ceramic materials	Monthly	Monthly
WATER	Water Resources Abstracts	Technical and scientific resources on water-related topics	Monthly	Monthly
WELDASEARCH	WELDASEARCH	Welding and allied processes	Monthly	Monthly

ABCD

ABC der Deutschen Wirtschaft®

–database removed from database clusters and STN

ABCD has been removed from STN, and from the BUSINESS and COMPANIES database clusters.

CASM/CAplus

–Russian Agency for Patents and Trademarks (ROSPATENT) added to core patent offices; patent coverage expanded to include U.S. plant patents

The Russian Agency for Patents and Trademarks (ROSPATENT) has been added to the list of core patent offices covered in CA/CAplus. Bibliographic information and available abstracts in patent documents from ROSPATENT are added to CAplus within 2 days of issuance and indexing is completed in 27 days.

The other core patent offices are the European Patent Office (EPO), French Patent Office (INPI - Institut National de la Propriete Industrielle), German Patent Office (DPMA), Japanese Patent Office (JPO), UK Patent Office, United States Patent & Trademark Office (USPTO), and World Intellectual Property Organization (WIPO).

Patent coverage in CA/CAplus has been expanded to include the addition of U.S. plant patents with kind codes P1, P2, and P3 as basics and patent family members. There are over 3000 of these from 2001 to the present in CAplus; in addition, the documents meeting CAS criteria for analysis have also been added to CA.

These patents provide useful information if you are interested in biological and chemical data about plants, including agricultural or horticultural application or uses.

CAS patent coverage information is available at:
www.cas.org/EO/caspat.html

The CA/CAplus Database Summary Sheets are available at:
www.cas.org/ONLINE/DBSS/cass.html
www.cas.org/ONLINE/DBSS/caplusss.html

CAplus

–patent coverage expanded

CAplus patent coverage of information from 23 patent-issuing authorities was expanded with the addition of approximately 25,000 patents and patent families from the Selectively Covered IPCs that have not been included in CA, but have been reviewed and considered for coverage in CAplus. These patents may have some value to a chemistry searcher, e.g., they may disclose information about equipment, but they do not meet the criteria for analysis by CAS scientists. These patent records from Selectively Covered IPCs include abstracts and titles in English, when available, but do not include CA indexing.

Patents from Selectively Covered IPCs from ARIPO, Australia, Bulgaria, Canada, Croatia, Czech Republic, Egypt, Greece, Hong Kong, Hungary, Israel, Lithuania, Latvia, New Zealand, Republic of Korea, Romania, Russia, Singapore, Slovenia, Slovakia, and Taiwan will be added on an ongoing basis.

In addition, patents from Selectively Covered IPCs for the years 2000-2004 were loaded for these countries as well as for India and South Africa. Patents from 2000-2002 from the Selectively Covered IPCs that were not selected for indexing were added for France and Great Britain. Since 2003, patents in these categories from France and Great Britain are already included in CAplus.

The CAplus Database Summary Sheet is available at:
www.cas.org/ONLINE/DBSS/caplusss.html

CERAB

Ceramic Abstracts/World Ceramics Abstracts
–database reloaded; updating resumed

Ceramic Abstracts/World Ceramics Abstracts (CERAB), produced by Cambridge Scientific Abstracts (CSA) in conjunction with CERAM Research Ltd., has been reloaded.

CERAB is a comprehensive database for the ceramics industry, providing international coverage of the manufacturing, processing, applications, properties, and testing of traditional and advanced ceramics from 1975 to the present, with selected records from earlier years.

Source materials include over 200 journals, conference proceedings, books, patents (through 1995), standards, and company product literature.

CERAB is updated monthly, and current-awareness alerts (SDIs) are available monthly.

The revised CERAB Database Summary Sheet is included with this issue of *STNews* and is available at:
www.cas.org/ONLINE/DBSS/cerabss.html

COMPUAB

Computer and Information Systems Abstracts –database reloaded; updating resumed

Computer and Information Systems Abstracts (COMPUAB), produced by Cambridge Scientific Abstracts (CSA), has been reloaded.

COMPUAB contains information on theoretical research and practical applications of computer science. Areas of coverage include control and information theories, mathematics, operations research, and probability and statistics. Scientific research and government policies on computer science information are contained in the database.

COMPUAB corresponds to the printed publication *Computer and Information Systems Abstracts*. Source materials include over 3,000 serial titles, including books, conference proceedings, government reports, and journals.

COMPUAB contains records from 1981 to the present. COMPUAB is updated monthly, and current-awareness alerts (SDIs) are available monthly.

The revised COMPUAB Database Summary Sheet is included with this issue of *STNews* and is available at: www.cas.org/ONLINE/DBSS/compuabss.html

DEMAS

German Trademarks Search System –database removed from database cluster and STN

DEMAS has been removed from STN and from the TRADEMARKS database cluster.

ELCOM

Electronics and Communications Abstracts –database reloaded; updating resumed

Electronics and Communications Abstracts (ELCOM), produced by Cambridge Scientific Abstracts (CSA), has been reloaded.

ELCOM provides relevant sources of information necessary to keep current on advances and events in the world of electronic systems, electronic circuits, and communications, including theoretical and applied research as well as business and marketing information.

Source materials include over 3,000 serial titles, numerous non-serial publications, conference proceedings, dissertations, government reports, journals, and patents.

ELCOM contains records from 1981 to the present and is updated monthly.

The revised ELCOM Database Summary Sheet is included with this issue of *STNews* and is available at: www.cas.org/ONLINE/DBSS/elcomss.html

EPFULL

European Patents Full Text –new patent full-text database available; added to database clusters

A new patent full-text database, European Patents Full Text (EPFULL), is now available on STN. EPFULL replaces the Wila-Derwent databases EUROPATFULL and PATOSEP on STN, which were removed on December 31, 2004.

EPFULL contains the following EPO data:

- Register of European Patents EBD (bibliographic data) from 1978 to the present
- Full text of EP-A documents from 1987 to the present
- Full text of EP-B documents from 1991 to the present
- Abstracts of EP-A documents in English, French, or German from 1978 to the present
- Abstracts created in English from EP-A documents published in French or German from 1978 to the present

An EPFULL record is comprised of all publication levels for an application number.

These records are available in full text and contain the searchable text of the entire document, including claims, patent applicants/assignees, inventors, patent application data, priority application data, and titles in English, French, and German. Claims are supplied in all three languages for EP-A documents and EP-B documents.

For expediency, legal status information from INPADOC may also be displayed.

Legal status data from INPADOC is displayable in the Legal Status (LS) and Legal Status detailed version with display headers (LS2) display fields.

EPFULL offers you the following benefits:

- Bibliographic data for EURO-PCT applications published by WIPO in English, French, and German (full text is available in PCTFULL)
- Simultaneous left and right truncation is available in the Claims (/CLM) field, as well as in the Basic Index (/BI)
- Individual display of each specific claim is available
- More search fields are available for specific retrieval and statistics, e.g., assignee and inventor country, city

EPFULL is updated weekly one or two days after publication and currently contains about 1.8 million records. Automatic current-awareness alerts (SDIs) are available every update.

EPFULL participates in the STN Information Keep & Share Program.

For pricing details, see HELP COST in the database.

EPFULL has been added to AEROTECH, ALLBIB, AUTHORS, CORPSOURCE, ENGINEERING, FULLTEXT, HPATENTS, PATENTS, and PNTTEXT database clusters.

A complete listing of database clusters is available at:
www.cas.org/ONLINE/CATALOG/CLUSTERS/cover.html

The EPFULL Database Summary Sheet is included with this issue of *STNews* and is available at:
www.cas.org/ONLINE/DBSS/epfullss.html

EUMAS

European Community Trademarks Search System
–database removed from database cluster and STN

EUMAS has been removed from STN and from the TRADEMARKS database cluster.

EUROPATFULL

European Patent Office Patents
–database removed from database clusters and STN

EUROPATFULL has been removed from STN and from the AEROTECH, ALLBIB, AUTHORS, CORPSOURCE, ENGINEERING, HPATENTS, PATENTS, and PNTTEXT database clusters.

EUROPEX

ABC Europe Production Europex
–database removed from database clusters and STN

EUROPEX has been removed from STN and from the BUSINESS and COMPANIES database clusters.

FORKAT

BMBF Support Catalog
–database removed from database clusters and STN

FORKAT has been removed from STN and from the CORPSOURCE, RESEARCH, and RFTOOLS database clusters.

IFIPAT/IFIUDB/IFICDB

IFI Patent Database/IFI Uniterm Database/IFI Comprehensive Database
–three new fields added

Three new search and display fields have been added to IFIPAT/IFIUDB/IFICDB. The new fields are:

- INCL – Issue National Patent Classification Code
- INCLM – Issue Main National Patent Classification Code
- INCLS – Issue Secondary National Patent Classification Code

The revised IFIPAT/IFIUDB/IFICDB Database Summary Sheets are available at:

www.cas.org/ONLINE/DBSS/ifipatss.html
www.cas.org/ONLINE/DBSS/ifiudbss.html
www.cas.org/ONLINE/DBSS/ificdbss.html

IRMAS

International Register Trademarks Search System
–database removed from database cluster and STN

IRMAS was removed from STN and from the TRADEMARKS database cluster.

LISA

Library and Information Science Abstracts
–new bibliographic database available; added to database clusters

A new bibliographic database, Library and Information Science Abstracts (LISA), is now available on STN. LISA is produced by Cambridge Scientific Abstracts (CSA).

LISA provides information on all areas of library and information science.

LISA corresponds to the printed *Library & Information Science Abstracts*. Sources include over 440 journals in more than 20 languages and from more than 68 countries.

LISA records contain:

- Abstract
- Bibliographic information
- Controlled vocabulary
- Titles in English and the original language

LISA contains more than 264,000 records from 1969 to the present. It is updated twice per month. Current-awareness alerts (SDIs) are available every update (default) or monthly.

Simultaneous left and right truncation is available in the Basic Index (/BI).

LISA participates in the STN Information Keep & Share Program.

For pricing information, see HELP COST in the database.

LISA has been added to the ALLBIB, AUTHORS, COMPUTER, ELECTRICAL, and HUMANITIES database clusters.

A complete listing of database clusters is available at:
www.cas.org/ONLINE/CATALOG/CLUSTERS/cover.html

The LISA Database Summary Sheet is included with this issue of *STNews* and is available at:
www.cas.org/ONLINE/DBSS/lisass.html

MEDLINE/LMEDLINE

–2005 MeSH vocabulary loaded

The 2005 MeSH vocabulary was incorporated into the Chemical Name (/CN), Controlled Terms (/CT), and MeSH Number (/MN) field thesauri.

The MEDLINE/LMEDLINE Database Summary Sheets are available at:

www.cas.org/ONLINE/DBSS/medliness.html
www.cas.org/ONLINE/DBSS/lmedliness.html

PATOSDE

Patent Online System Deutschland
–database removed from database clusters and STN

PATOSDE was removed from STN and from the ALLBIB, AUTHORS, CORPSOURCE, HPATENTS, and PATENTS database clusters.

PATOSEP

Patent Online System Europa
–database removed from database clusters and STN

PATOSEP was removed from STN and from the AEROTECH, ALLBIB, AUTHORS, CORPSOURCE, ENGINEERING, HPATENTS, and PATENTS database clusters.

PATOSWO

Patent Online System World
–database removed from database clusters and STN

PATOSWO was removed from STN and from the AEROTECH, ALLBIB, AUTHORS, CORPSOURCE, ENGINEERING, HPATENTS, and PATENTS database clusters.

REGISTRY/ZREGISTRY

–additional experimental property values from 1940-1987 CA records added

During December 2004, approximately 100,000 new experimental property values from abstracts in CA records from 1940-1987 were added to REGISTRY. The experimental property values include Boiling Point, Density, Glass Transition Temperature, Magnetic Moment, Median Lethal Dose, Melting Point/Sublimation, Optical Rotatory Power, Refractive Index, and Tensile Strength.

The REGISTRY/ZREGISTRY Database Summary Sheets are available at:

www.cas.org/ONLINE/DBSS/registryss.html
www.cas.org/ONLINE/DBSS/zregistryss.html

RUSSCI

Russian Scientific News
–database removed from database clusters and STN

RUSSCI was removed from STN and from the ALLBIB, AUTHORS, CHEMENG, CHEMISTRY, CORPSOURCE, ENGINEERING, MATERIALS, METALS, PETROLEUM, PHYSICS, and RESEARCH database clusters.

SCISEARCH®

Science Citation Index

–three search and display fields removed

One search and display field, as well as two search fields, have been removed from SCISEARCH:

- Research Front (RF) – search and display field
- Research Front Word (/RFW) – search field
- Research Front Weight (/RFWT) – search field

The revised SCISEARCH Database Summary Sheet is available at: www.cas.org/ONLINE/DBSS/scisearchss.html

SIGLE

System for Information on Grey Literature in Europe

–database removed from database clusters and STN

SIGLE was removed from STN and from the ALLBIB, AUTHORS, CORPSOURCE, ENGINEERING, HUMANITIES, MATERIALS, PHYSICS, and RFTOOLS database clusters.

SOLIDSTATE

Solid State and Superconductivity Abstracts

–database reloaded; updating resumed

Solid State and Superconductivity Abstracts (SOLIDSTATE), produced by Cambridge Scientific Abstracts (CSA), has been reloaded.

SOLIDSTATE contains information on solid state studies, including applications, physics, and superconductivity of metallic, plastic, and ceramic materials.

SOLIDSTATE corresponds to the printed publication *Solid State and Superconductivity Abstracts Journal*. Source materials include books, conference proceedings, government reports, and journals.

SOLIDSTATE contains records from 1981 to the present. It is updated monthly, and current-awareness alerts (SDIs) are available monthly.

The revised SOLIDSTATE Database Summary Sheet is included with this issue of *STNews* and is available at: www.cas.org/ONLINE/DBSS/solidstatess.html

TOXCENTERSM

Toxicology Center

–2005 MeSH vocabulary loaded to MEDLINE file segment

The 2005 MeSH vocabulary was incorporated into the Chemical Name (/CN), Controlled Terms (/CT), and MeSH Number (/MN) field thesauri in the MEDLINE file segment.

The TOXCENTER Database Summary Sheet is available at: www.cas.org/ONLINE/DBSS/toxcenterss.html

TRADEMARKS

–cluster no longer available on STN

The TRADEMARKS database cluster has been removed from STN.

WPIDS/WPINDEX/WPIX

Derwent World Patents Index®

–two Derwent Chemistry Resource display fields no longer available; currency improved; manual code revisions implemented; Chinese application numbers changed

Two Derwent Chemistry Resource display fields, ISOSMILES strings (ISMI) and SMILES strings (SMIL), are no longer available.

Value-added patent documents from key issuing authorities are now added to Derwent World Patents Index (WPIDS/WPINDEX/WPIX) within an average of 30 days of publication.

During the first update of 2005, Thomson Scientific implemented Manual Code revisions in the Derwent databases by adding over 1,000 new Electrical Patents Index (EPI) and Chemical Patents Index (CPI) codes, amending and enhancing scope notes, and retiring old codes.

The format of application numbers for Chinese Published Applications (CN-A) documents being added to Derwent World Patents Index has been changed to accommodate recent format changes made by the Chinese Patent Office.

For additional information, visit: thomsonderwent.com/coverage/latestupdates/cn_a-numformat-change/

The revised WPIDS/WPINDEX/WPIX Database Summary Sheets are available at:

www.cas.org/ONLINE/DBSS/wpids.html
www.cas.org/ONLINE/DBSS/wpidex.html
www.cas.org/ONLINE/DBSS/wpix.html

WPIFV

Derwent World Patents Index First ViewSM

–new training material available

A new manual that illustrates how to search in WPIFV, *The Derwent World Patents Index First View* STN User Guide, is now available at: www.stn-international.de/training_center/patents/dwpihv_man.pdf

The WPIFV Database Summary Sheet is available at: www.cas.org/ONLINE/DBSS/wpifvss.html

Databases available via the Patent Search Assistant and Search Assistant modified



The databases accessible via the Patent Search Assistant and Search Assistant in STN® on the WebSM have been modified.

The following databases have been added:

- EPFULL is now available via both the Patent Search Assistant and the Search Assistant

In addition, patent number hyperlinks have been added to the EPFULL data in the Patent Information (/PI), Patent Application Information (/AI), and Priority Application Information (/PRAI) fields.

Additional information about EPFULL is available in the Database News section of this issue of *STNews*.

- FRANCEPAT, FRFULL, and KOREAPAT are also available via the Search Assistant

Four databases have been removed from the Patent Search Assistant:

- European Patent Office Patents (EUROPATFULL)
- Patent Online System Deutschland (PATOSDE)
- Patent Online System Europa (PATOSEP)
- Patent Online System World (PATOSWO)

The Patent Search Assistant in STN on the Web.

In addition, 12 databases have been removed from the Search Assistant:

- ABC der Deutschen Wirtschaft (ABCD)
- German Trademarks Search System (DEMAS)
- European Community Trademarks Search System (EUMAS)
- European Patent Office Patents (EUROPATFULL)
- ABC Europe Production Europex (EUROPEX)

- BMBF Support Catalog (FORKAT)
- International Register Trademarks Search System (IRMAS)
- Patent Online System Deutschland (PATOSDE)
- Patent Online System Europa (PATOSEP)
- Patent Online System World (PATOSWO)
- Russian Scientific News (RUSSCI)
- System for Information on Grey Literature in Europe (SIGLE)



SET it right

The SET command on STN is a powerful and versatile tool for customizing your STN sessions. The command is available in more than 50 different options. A number of the SET parameters have also been incorporated into the STN Express® with *Discover!*™ preferences. This article illustrates some of the ways the SET command options can be used to personalize your STN online experience.

SET parameters usually last for the duration of your online session, but many can be optionally made permanent for a given STN login ID. For example, to always see the complete detailed estimated cost at logoff, use:

=> SET LCOST FULL PERM

Adding the keyword PERM makes the command your default setting for the function until you change it. To turn off the command option or to return to the original default setting, simply type SET LCOST.

Other SET options are permanent by their very nature, e.g., SET PASSWORD. Still other SET commands are only active in the database in which you are working when the option is invoked, e.g., SET RANGE.

This table illustrates several useful SET commands:

Enter SET	To...	Example
ACCOUNT	Always prompt you for a cost center at login	=> SET ACC PROMPT PERM
CLUSTER	Create a personal database cluster	=> SET CLUSTER ENTER CLUSTER NAME R(?):.MYCLUSTER ^{1,2} ENTER LIST OF FILE NAMES OR(?):HCAPLUS BIOSIS MORE FILES, (NONE), OR ?:NONE
AUDIT	Create an L-number of unmatched terms from the search of an ANALYZE or TRANSFER L-number	=> SET AUDIT ENTER (ON) OR OFF: ³
STEPS	Create an L-number for each intermediate posting for a search result	=> SET STEPS ON
MSTEPS	Always create L-numbers for each database result in a multifile search	=> SET MSTEPS ON PERM
FIELDS	Create a custom search field	=> SET FIELD ENTER SEARCH FIELD NAME OR (?):.MYSEA1 ^{1,4} ENTER SEARCH FIELD DEFINITION OR (?):TI AB SO ST
SFIELDS	Make a custom search field the permanent default search field for a database	=> SET SFIELDS .MYSEA1 ^{1,4} PERM => SET SFIELDS TI AB SO PERM
PLURALS	Always search for plurals where allowed	=> SET PLU ON PERM
ABBREVIATIONS	Always search for abbreviations where allowed	=> SET ABB ON PERM
FORMAT	Create a custom display format	=> SET FORMAT .MYSHO ^{1,4} AN TI AU CS SO AB IND
DFORMAT	Make the custom display format the permanent default display format for a database	=> SET DFORMAT .MYSHO ^{1,4} PERM => SET DFOR AN TI AU CS SO AB IND PERM
COST BRIEF	Display the more detailed estimated cost for the current database whenever requested with D COST or whenever a FILE command is entered	=> SET COST BRIEF To see full estimated cost details for the current file
COST FULL	Display the more detailed estimated cost for the current database whenever requested with D COST or whenever a FILE command is entered	=> SET COST FULL To see full estimated cost detail for the entire session

¹ Name must begin with a period (.).

² Custom database clusters are retained permanently.

³ Enter a period at a colon prompt to take the default option which is shown in parentheses.

⁴ Custom search fields are retained permanently.

Search Tip

Displaying SET parameters

To see all of the SET parameters for your login ID, use the DISPLAY SET command. The headings indicate the current settings, whether permanent is ON at login time, and the STN default for the parameter.

To see the settings for a specific SET parameter, enter DISPLAY SET 'option', e.g., DISPLAY SET FORMAT.

Additional Resources

For more information about SET commands:

- Visit *Mastering STN Commands: SET*, available at: www.cas.org/training/stncommands/set.html
- Watch the *Have It Your Way—Customizing Your STN Account* e-Seminar, available at: www.cas.org/training/eseminars/eventdes.html#have

Or enter the following at an arrow prompt (=>) while online in STN:

- HELP SET for more information about the SET command
- HELP SET 'option' for the function and setup values for an option, e.g., HELP SET AUDIT

Or, contact your STN Service Center.

The SET command on STN is a powerful and versatile tool for customizing your STN sessions.

=> D SET

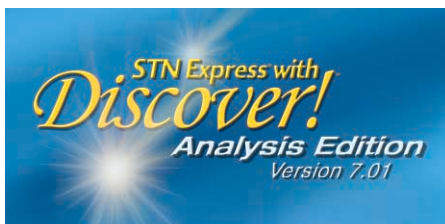
SET PARAMETER	CURRENT	PERMANENT	LOGIN	DEFAULT
ABBREVIATION	,ON'	,ON'	,ON'	,OFF'
ACCOUNT	CURRENT	,NONE'		
	PERMANENT	,NONE'		
	LOGIN	,NONE'		
	DEFAULT	,NONE'		
AUDIT	,OFF'		,OFF'	,OFF'
AUHELP	,ON'		,ON'	,ON'
	.			
	.			
	.			
SUBSET	,NONE'		,NONE'	,NONE'
TERMSET	,E#'		,E#'	,E#'
TLANGUAGE	,ALL'		,ALL'	,ALL'

TO SEE USER-DEFINED CLUSTER DEFINITIONS, ENTER „DISPLAY CLUSTER“
TO SEE USER-DEFINED SEARCH FIELD DEFINITIONS, ENTER ,DISPLAY FIELD'
TO SEE USER-DEFINED FORMAT DEFINITIONS, ENTER ,DISPLAY FORMAT'
TO SEE TOLERANCE FOR NUMERIC FIELDS, ENTER ,DISPLAY TOLERANCE'
TO SEE UNITS FOR NUMERIC FIELDS, ENTER ,DISPLAY UNIT'

=> D SET LCOST

SET PARAMETER	CURRENT	PERMANENT	LOGIN	DEFAULT
LCOST	,FULL'	,FULL'	,FULL'	,ON'

Accessing additional data through hyperlinked terms



To make it easy to obtain additional data without having to enter commands in STN Express with *Discover!*, some terms in online records are automatically hyperlinked. Simply click on a hyperlinked term to display additional information or to view options for obtaining additional information.

Displaying cited references

To display a cited reference, click on the hyperlinked name of the referenced database, e.g., [CAPLUS](#).

Hyperlinked term	Additional information
Full-text	Full-text options for this record
Patent or priority number	Full text, legal status, English language equivalents, and extended patent family information
CAplus link for a cited reference	The cited reference from CAplus in BIB ABS format

Display the CAplus record for the first cited reference of the following patent.

```
=> D BIB RE

L1 ANSWER 1 OF 1 CAPLUS COPYRIGHT 2005 ACS on STN
AN 2004:1035069 CAPLUS Full-text
DN 142:30325
TI Pyran derivatives for use in liquid crystal media
IN Poetsch, Eike; Binder, Werner; Meyer, Volker; Heckmeier, Michael; Luessem,
   Georg
PA Merck Patent GmbH, Germany
SO Eur. Pat. Appl., 110 pp.
   CODEN: EPXXDW
DT Patent
LA German
FAN.CNT 1
PATENT NO.          KIND   DATE          APPLICATION NO.      DATE
-----
PI EP 1482019          A1    20041201      EP 2004-10357        20040430
   R: AT, BE, CH, DE, DK, ES, FR, GB, GR, IT, LI, LU, NL, SE, MC, PT,
     IE, SI, LT, LV, FI, RO, MK, CY, AL, TR, BG, CZ, EE, HU, PL, SK, HR
   JP 2004352721        A2    20041216      JP 2004-157022      20040527
PRAI DE 2003-10324312    A     20030527
RE
(1) Basf Ag; DE 19640618 A 1996 CAPLUS
(2) Merck Patent GmbH; DE 3306960 A 1984 CAPLUS
(3) Mitsubishi Rayon Co; EP 0409066 A 1991 CAPLUS
(4) Sakashita, K; US 5480580 A 1996 CAPLUS
```

STN Express with *Discover!* automatically performs the commands necessary to display the cited reference in the BIB ABS format in CAPLUS.

```
=> SET SMA OFF

SET COMMAND COMPLETED

=> SEL RAN.CAPLUS(1) L1 1

E1 THROUGH E1 ASSIGNED

=> SET SMA LOGIN

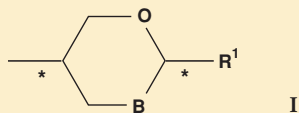
SET COMMAND COMPLETED

=> S E1

L2          1 "1998:217584"/AN

=> D L2 BIB,ABS

L2 ANSWER 1 OF 1 CAPLUS COPYRIGHT 2005 ACS on STN
AN 1998:217584 CAPLUS Full-text
DN 128:288395
TI Chiral smectic liquid crystal compound
IN Siemensmeyer, Karl; Gesekus, Gunnar; Vill, Volkmar
PA BASF A.-G., Germany
SO Ger. Offen., 10 pp.
CODEN: GWXXBX
DT Patent
LA German
FAN.CNT 1
PATENT NO.      KIND  DATE      APPLICATION NO.  DATE
-----
PI DE 19640618   A1  19980402  DE 1996-19640618 19961001
WO 9814442     A1  19980409  WO 1997-EP5032   19970915
W: AL, AM, AU, AZ, BG, BR, BY, CA, CN, CZ, GE, HU,
  IL, JP, KG, KR, KZ, LT, LV, MD, MX, NO, NZ, PL,
  RO, RU, SG, SI, SK, TJ, TM, TR, UA, US, AM, AZ,
  BY, KG, KZ, MD, RU, TJ, TM
RW: AT, BE, CH, DE, DK, ES, FI, FR, GB, GR, IE, IT,
  LU, MC, NL, PT, SE
AU 9747032     A1  19980424  AU 1997-47032    19970915
PRAI DE 1996-19640618 A  19961001
WO 1997-EP5032 W  19970915
OS MARPAT 128:288395
GI
```



AB The title compound contains a chiral residue of a general formula I (B = single bond, double bond; R1 = F, Cl, Br, CN, C1-30-alkyl, Ph, C5-7-cycloalkyl). The compound can be used in display technologies and in optoelectronic data storage media, etc.

Creating links

If you want to obtain additional information for a displayed CAS Registry Number®, patent number, or priority number that is not hyperlinked, simply:

1. Double click on the item of interest to select it.
2. Click on it again to view the options for obtaining additional information.

For example, to locate refractive index data for a CAS Registry Number:

1. Click on the CAS Registry Number.
2. Select **Get property data**, then select **Optical Properties**, and then **Refractive Index**.

Additional Resources

For more information, visit:
www.cas.org/ONLINE/STN/expresresources.html

Locate refractive index data for CAS Registry Number 801319-47-1.

The screenshot shows a search result for CAS Registry Number 801319-47-1. The interface displays bibliographic information for a patent document. A context menu is open over the CAS number, with 'Get property data' selected. A sub-menu is also open, showing 'Optical Properties' selected, and a further sub-menu showing 'Refractive Index' selected. The background text includes fields like AN, DN, TI, IN, PA, SO, CODEN, DT, LA, FAN, CNT, PATENT, PI, R:, JP, DE, PRAI, RE, and a list of references.

STN Express with *Discover!* automatically performs the necessary steps to display the requested property information.

```
=> FIL REGISTRY

=> S 708277-32-1/RN
L3          1 708277-32-1/RN

=> D RN CN RI 1-
.
.
.

L5 ANSWER 1 OF 1 REGISTRY COPYRIGHT 2005 ACS on STN
RN 708277-32-1 REGISTRY
CN 2H-Pyran, 2-[3'-fluoro-4'-(trifluoromethoxy)[1,1'-
biphenyl]-4-yl]tetrahydro-5-propyl-, (2R,5S)-rel- (9CI)
(CA INDEX NAME)

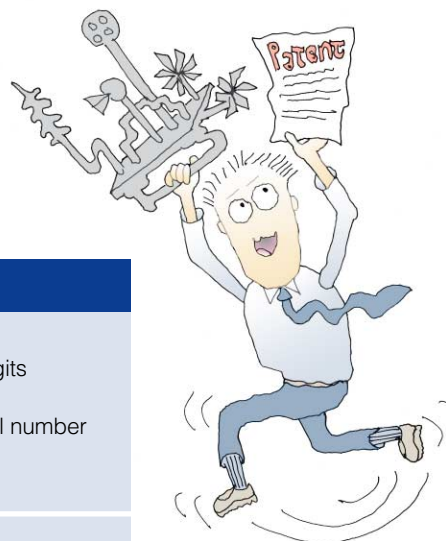
CODE|VALUE | TYPE | NOTE
====+=====+=====+=====
RI |1.4822|Experimental|(1) CAS
RI |.1380 |Experimental|(2) CAS

(1) Goulding, Mark John; EP 1482021 A1 2004 CAPLUS
(2) Poetsch, Eike; EP 1482019 A1 2004 CAPLUS

See HELP PROPERTIES for information about property data
sources in REGISTRY.
```

Searching German patents

The Patent Interchange article in the July/August 2001 issue of *STNews* (www.cas.org/STNEWS/JULAUG01/patent.html) provided an overview of searching patent/publication numbers on STN. This article provides additional details on searching German patents on STN.



Time period	STN format and format description	Example
Prior to 1995	DEXNNNNNN • DE is the country code • XX is the last 2 digits of the year for utility models and the last 2 digits of the year minus 50 for other patent documents • NNNNN is a fixed length (5) serial number	DE9412345 • 94 is the last 2 digits of the year • 12345 is the serial number
1995-2003	DEXYYNNNNN • DE is the country code • X is the number for the type of patent • YY is the last 2 digits of the application year • NNNNN is a fixed length (5) serial number	DE19717184 • 1 is the code for the type of patent • 97 is the last 2 digits for the year • 17184 is the serial number
January 2004 to the present	DEXYYYYNNNNN • DE is the country code • XX is a 2-digit number for the type of patent • YYYY is a 4-digit year • NNNNNN is a fixed length (6) serial number	DE202004000099 • 20 is the code for the type of patent • 2004 is the 4-digit year • 000099 is the serial number

This table describes the STN format and examples for entering German patent numbers for different time periods.

Codes for the types of German patents.

Time period	Code	Meaning
1995-2003	1	Patent application
	2	Utility model application
	3	Trademark application
	4	Designs or topographies
	5	EP patents designated for DE (Germany) in German
	6	EP patents designated for DE in English or French
January 2004 to the present	10	National application
	11	PCT application with designation DE
	12	Supplementary protection certificate
	20	Utility model application
	21	Utility model application from PCT application
	30	Trademark application
	50	EP patents designated for DE in German
	60	EP patents designated for DE in English or French

This table describes the codes for the type of patents needed to search German patents from 1995 to the present.

Additional databases covering European patents added



STN Easy and STN Easy for IntranetsSM have been enhanced with three additional patent databases, including EPFULL, a new European patent information database that replaced EUROPATFULL.

In addition, the removal of EUROPATFULL affects Defined Searches, Custom Categories, and Alerts that contained the database.

Three additional databases available

The following databases are now available in STN Easy and STN Easy for Intranets:

Database	Category
EPFULL	Patents; Patents, Full Text
FRANCEPAT	Patents; Patents, National
FRFULL	Patents; Patents, Full Text

EPFULL and FRFULL are full-text patent databases, covering patent information from the European Patent Office and French patent applications, respectively. FRANCEPAT provides information on French patent applications and granted patents. The addition of these databases provides access to more European patent information via STN Easy and STN Easy for Intranets.

Over 100 databases are now available via STN Easy, and over 110 databases are now available via STN Easy for Intranets.

EUROPATFULL removed; Defined Search, Custom Category, and Alerts affected

EPFULL, a new European patent information database, replaced EUROPATFULL on STN Easy and STN Easy for Intranets at the beginning of 2005. EPFULL contains data that was previously available via EUROPATFULL, as well as some additional content, e.g., legal status data.

If you have a Defined Search, Custom Category, or Alert (SDI) containing EUROPATFULL, you may be impacted by the removal of this database.

If EUROPATFULL is included in your...	Then...
Defined Search	<p>The search no longer runs.</p> <p>To re-establish the search, you need to:</p> <ol style="list-style-type: none"> 1. Delete the affected Defined Search. 2. Create and save the Defined Search again replacing EUROPATFULL with EPFULL.
Custom Category¹	<p>An error message displays if EUROPATFULL is the only database in the category.</p> <p>The search runs without listing or searching EUROPATFULL if the category still contains at least one valid database.</p> <p>To continue to search European patent information in your Custom Category, replace EUROPATFULL with EPFULL.</p>
Single-file current-awareness alert¹	<p>The alert no longer runs. Results already posted to the specified STN Easy for Intranets site remain available for 90 days from the date the results were originally posted.</p> <p>If the current-awareness alert is still needed, you must set it up again using EPFULL.</p>
Multi-file current-awareness alert¹	<p>The alert continues to run. Results continue to be generated and posted to the specified STN Easy for Intranets site. Results do not contain answers from EUROPATFULL.</p> <p>To continue to search European patent information in your multi-file current-awareness alert, replace EUROPATFULL with EPFULL in your query.</p>

¹ STN Easy for Intranets only.

Take Note

STN Express with *Discover!* customers accessing STN via dial-up should change to Internet



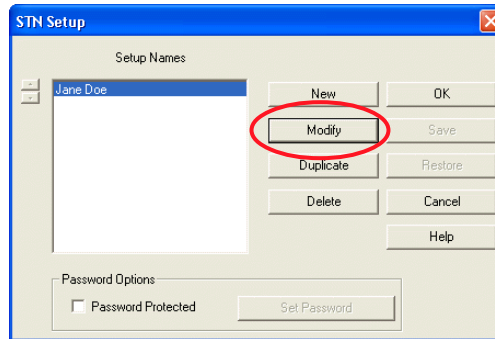
It is easy for STN Express with *Discover!* users to switch to Internet access. Simply follow these steps.

1. Open STN Express with *Discover!*.

2. Click the **Setup** button on the main toolbar.



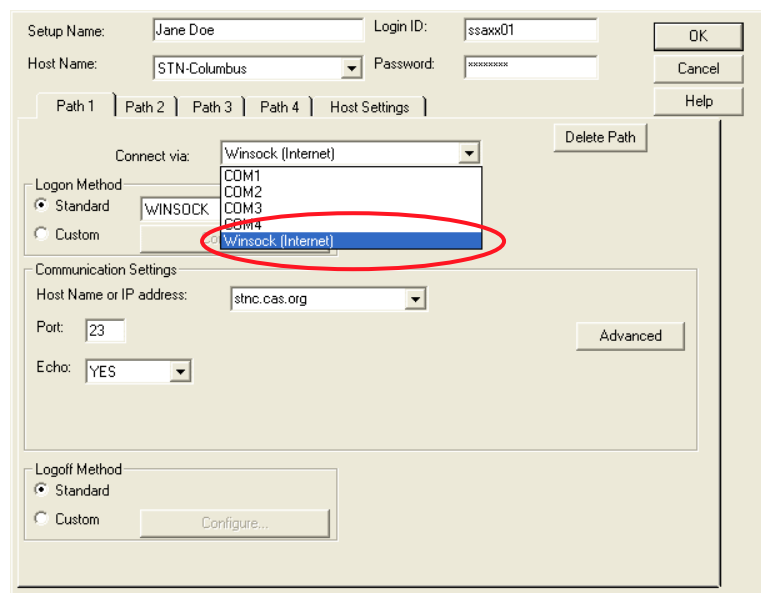
3. In the STN Setup window, click **Modify**.



Are you an STN Express with *Discover!* customer who is still accessing STN via dial-up? This method of access is also known as Value Added Network (VAN) or X.25 access. X.25 is the protocol used to establish the connection to the Value Added Network. In the past, accessing database services via VANs was very popular, but the number of STN customers using X.25 has decreased significantly in recent years. Today, all X.25 connections into the STN-Columbus node connect through MCI®. MCI has announced support of X.25 telecommunications only until June 2006.

We want to ensure that your future access to STN is uninterrupted, and suggest that you consider switching now to Internet access—a popular, reliable means of access that will significantly reduce the portion of your search costs attributable to telecommunications charges.

4. Select **Winsock (Internet)** from the Connect via: drop-down menu.



Or, contact your local STN Service Center for assistance.

Previously recorded CAS e-Seminars available

Previously recorded CAS e-Seminars are available on the Web for your viewing convenience around the clock. Recorded Events include both video and audio.

Currently available previously recorded CAS e-Seminars include:

- STN: Multiple Methods of Keeping Current
- STN: Reaction Searching
- STN: Using the Cambridge Scientific Abstract (CSA) Files
- STN: Visualization Tools in STN Express with *Discover!*, Analysis Edition (Version 7.01)
- STN: Advanced MARPAT® Techniques
- STN: Introduction to Polymers
- STN: Advanced Structure Search Techniques—Ring Information
- STN: “Biotextology”—Text Search Techniques for Biological Information
- STN: Have It Your Way—Customizing Your STN Account
- STN: Patent Citation Searching
- STN: All About MARPAT
- STN: Searching for Patent Families
- STN: Post-processing Search Results with the Analysis Edition of STN Express with *Discover!*
- STN: Structure and Substructure Searching Tips
- STN: Expanding Your Prior Art Search with Controlled Terminology
- STN: Biotech Patent Validity Tips
- STN: Increasing Confidence in Search Results

For a description of each CAS e-Seminar or to view one or more, visit:

www.cas.org/training/eseminars/eventlist.htm#events

STN documentation offering updated

Many STN materials have recently been updated to better meet your needs. These include:

- A revised STN User Documentation Order Form

The revised form is included with this issue of *STNews* and is available at: www.cas.org/ONLINE/STN/docform.pdf

- Updates to the STN Resources web page within the CAS Learning Center

The updated page is available at: www.cas.org/ONLINE/STN/doc.html

In particular, please notice the new “reference materials” section, which contains links to valuable resources, some of which are available only on the Web.

- Revised STN user documentation

The following documents have recently been updated:

STNNotes

- No. 25 The CA Lexicon on STN

STN Quick Reference Cards and Guides

- CAS Registry BLAST® Similarity Searching via STN on the Web
- Citation Searching in SciSearch
- Current Awareness Alerts in Single Files on STN
- Multifile Current-Awareness Alerts (SDIs)
- Protein Sequences in the CAS Registry File on STN – Exact and Pattern Searching
- SMARTracker in CAS Files
- Using Online Thesauri on STN
- Using INDEX on STN

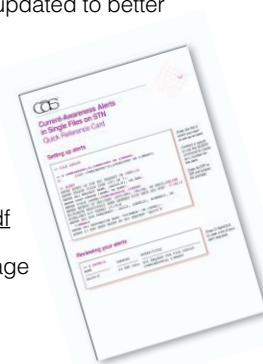
Instructional Materials

- Using CAS Databases on STN (Student Manual)
- Structure Searching in the CAS Registry File on STN (Student Manual III)

All of these documents are available at the STN Resources web page:

www.cas.org/ONLINE/STN/doc.html

To obtain hard copies free of charge, please return the STN User Documentation Order Form or contact CAS Customer Care at help@cas.org. Be sure to include your name and complete mailing address with your request.



2005 CAS Catalog available

The 2005 CAS Catalog provides an overview of:

- All CAS products and services
- CAS database content
- STN databases
- STN database clusters
- STN database producers
- CAS Customer Care contact information
- And more



The 2005 CAS Catalog is available in hardcopy and also on CD.

Are you interested in receiving a free copy?

To request a catalog in hardcopy or on CD, contact CAS Customer Care at help@cas.org. Be sure to include your name and complete address with your request.

Or use the STN User Documentation Order Form available with this issue of *STNews* or on the web at: www.cas.org/ONLINE/STN/docform.pdf.

2005 STN and STN Express with *Discover!* prices available

Copies of both the 2005 STN Price List and 2005 STN Express with *Discover!* Price List are included with this issue of *STNews*.

2005 STN prices can also be accessed by typing HELP PRICE in a database or on the Web at: www.cas.org/stnprice.pdf

2005 STN Express with *Discover!* prices are also available at: www.cas.org/ONLINE/STN/expressprices.html

STN wall chart available

The 2005 STN databases and clusters wall chart is available.

To receive your copy, contact CAS Customer Care at help@cas.org. Be sure to include your name and complete mailing address with your request.

2005 CAS exhibits

www.cas.org/exhibit.html

IPI/ConfEX 2005

March 6-10
Benalmádena, Spain

Netherlands' Catalysis & Chemistry Conference

March 7-9
Noordwijkerhout, The Netherlands

Drug Discovery Technology® Europe & InfoTechPharma PharmaSolutions Expo 2005

March 14-16
London, United Kingdom

ACS Spring 2005

March 13-17
San Diego, California

GlobalChem

March 22-23
Arlington, Virginia

Molecular Medicine Tri-Conference

April 19-22
San Francisco, California

Korean Chemical Society Spring Meeting

April 21-22
Incheon, Korea

Korean Institute of Chemical Engineers Spring Meeting

April 22-23
Yeosu, Korea

Finnish Chemical Congress/Chembio

April 26-28
Helsinki, Finland

Interpex Japan

May 18-20
Tokyo, Japan

PIUG Annual Conference

May 21-26
Crystal City, Virginia

BioTech Israel

May 24-26
Tel-Aviv, Israel

Canadian Chemical Society Meeting

May 28-June 1
Saskatoon, Saskatchewan
Canada

iExpo

June 1-2
Paris, France

SLA Annual Conference 2005

June 4-9
Toronto, Ontario, Canada

Beyond Genome

June 13-16
San Francisco, California

BIO 2005

June 19-22
Philadelphia, Pennsylvania

South African Online Conference

June 21-23
Pretoria, Gauteng,
South Africa

Drug Discovery Technology

August 7-12
Boston, Massachusetts

IFLA '05

August 14-18
Oslo, Norway

ACS Fall 2005

August 28-September 1
Washington, DC

IPO Annual Meeting

September 11-13
Seattle, Washington

STNewsline—did you sign up?

STNewsline, our electronic newsletter, is published every month. Are you receiving it?

You are not automatically signed up to receive STNewsline just because you receive *STNews*. We need your e-mail address to send it to you.

So, if you would like to receive the latest news about STN, visit:

www.cas.org/STNEWS/signup.html

Or, simply complete this form and fax it to: *STNews* Editor, 614-447-3837.

YES! Sign me up to receive STNewsline:

NAME

E-MAIL ADDRESS

ORGANIZATION

COUNTRY

STNews binders available



Need a binder for your 2004 issues of *STNews*? Want a binder for your 2005 issues? CAS has *STNews* binders available!

To request your free binders, contact CAS Customer Care at help@cas.org. Be sure to include your name and complete address with your request.

2005 STN Easy Price List available

The 2005 STN Easy and STN Easy for Intranets Price List is available.

To receive your copy, contact CAS Customer Care at help@cas.org. Be sure to include your name and complete mailing address with your request.

2005 STN Easy and STN Easy for Intranets prices are also available at:

stneasy.cas.org/html/english/pricecol.html

STN Easy and STN Easy for Intranets wall chart available

The 2005 STN Easy and STN Easy for Intranets databases and categories wall chart is available.

To receive your copy, contact CAS Customer Care at help@cas.org. Be sure to include your name and complete mailing address with your request.

STNews

STNews is written and produced cooperatively by Chemical Abstracts Service, FIZ Karlsruhe, and JST and printed in three separate editions.

Staff, North American Edition:

Editors: Kristina Gobel
Crystal Poole

Contributing Editors:

Jim Blake
Elizabeth Haines

FIZ Karlsruhe

Dr. Gerhard Herlan

Design/Production:

Pat Farnlacher
Nadine Seeley

JST

Ryosuke Shimamori

For the North American Edition © 2005 American Chemical Society. Quoting or republishing of material from *STNews* is encouraged provided that acknowledgement is made of *STNews* as the source. CAS requests that a copy of the reproduced material be sent to CAS Customer Care, P.O. Box 3012, Columbus, OH 43210-0012 U.S.A. Please send all address changes to CAS, P.O. Box 3012, Columbus, OH 43210-0012 U.S.A. E-mail us at help@cas.org.

2005 CAS e-Seminars

www.cas.org/training/eseminars/eventlist.html

3/17	8:30-9:30 a.m.	STN: Organometallics and Coordination Compounds
3/29	1:00-2:00 p.m.	STN: Improving Searches by Including Patent Classification Codes
4/14	8:30-9:30 a.m.	STN: Improving Searches by Including Patent Classification Codes
4/26	1:00-2:00 p.m.	STN: Finding Post-Treated and Blended Polymers
5/12	8:30-9:30 a.m.	STN: Finding Post-Treated and Blended Polymers
5/31	1:00-2:00 p.m.	STN: Strategies for Finding Novel Formulations
6/9	8:30-9:30 a.m.	STN: Strategies for Finding Novel Formulations
6/28	1:00-2:00 p.m.	STN: Advanced Structure Searching with Filters/Screens
7/14	8:30-9:30 a.m.	STN: Advanced Structure Searching with Filters/Screens
7/26	1:00-2:00 p.m.	STN: Finding Regulatory Information
8/11	8:30-9:30 a.m.	STN: Finding Regulatory Information

All times are U.S. Eastern Time.

For a description of each e-Seminar, visit:
www.cas.org/training/eseminars/eventdes.html

To register, visit:
casevents.webex.com

2005 STN instructor-led seminars

www.cas.org/training/schedule.html

Columbus, OH

4/5	9:00 a.m.-12:00 p.m.	STN Basics
4/5	1:00 p.m.-4:00 p.m.	STN Intermediate
4/6	9:00 a.m.-4:00 p.m.	Structure Searching in REGISTRY
4/7	9:00 a.m.-4:00 p.m.	Markush Searching in the Patent Literature

Milpitas, CA

3/21	8:30 a.m.-4:00 p.m.	STN Patent Forum
------	---------------------	------------------

San Diego, CA

3/13	8:30 a.m.-11:30 a.m.	STN User Update
3/15	1:30 p.m.-5:00 p.m.	BEILSTEIN on STN*
3/17	8:30 a.m.-4:00 p.m.	STN Patent Forum

Seattle, WA

3/24	8:30 a.m.-4:00 p.m.	STN Patent Forum
------	---------------------	------------------

*Offered by FIZ Karlsruhe.

All STN instructor-led seminars in North America are free, but registration is required.

To register, visit:
www.cas.org/training/regform.html



CAS Customer Care:

Phone: 800-753-4227 (North America) or 614-447-3700 (worldwide)

CAS:

Phone: 800-848-6538 (North America) or 614-447-3600 (worldwide)

E-mail:

help@cas.org

CAS web page:

www.cas.org

STN web page:

www.cas.org/stn.html

Information Professionals: www.cas.org/infopro/

Patent Information on STN: www.cas.org/patents/

STNews:

www.cas.org/STNEWS/stnewscover.html

STNews back issues:

www.cas.org/STNEWS/backissue.html

In This Issue

Feature

CSA databases on STN—Opening the world of computing, engineering, materials science, and water, air, earth, and life sciences 2

Database News

ABCD, CA/CAPLUS, CAPLUS, CERAB	10
COMPUAB, DEMAS, ELCOM, EPFULL	11
EUMAS, EUROPATFULL, EUROPEX, FORKAT, IFIPAT/IFIUDB/IFICDB, IRMAS	12
LISA, MEDLINE/LMEDLINE, PATOSDE, PATOSEP, PATOSWO, REGISTRY/ZREGISTRY, RUSSCI	13
SCISEARCH, SIGLE, SOLIDSTATE, TOXCENTER, TRADEMARKS, WPIDS/WPINDEX/WPIX, WPIFV	14

STN on the Web

Databases available via the Patent Search Assistant and Search Assistant modified 15

Search Tip

SET it right 16

STN Expressway

Accessing additional data through hyperlinked terms 18

Patent Interchange

Searching German patents 21

STN Easystreet

Additional databases covering European patents added 22

Take Note

STN Express with <i>Discover!</i> customers accessing STN via dial-up should change to Internet	23
Previously recorded CAS e-Seminars available	24
STN documentation offering updated	24
2005 CAS Catalog available	25
2005 STN and STN Express with <i>Discover!</i> prices available	25
STN wall chart available	25
2005 CAS exhibits	25
2005 STN Easy Price List available	26
STN Easy and STN Easy for Intranets wall chart available	26
STNews binders available	26

STN Seminars

2005 CAS e-Seminars	27
2005 STN instructor-led seminars	27

Included with this issue

CERAB, COMPUAB, ELCOM, EPFULL, LISA, and SOLIDSTATE Database Summary Sheets, 2005 STN Price List, 2005 STN Express with *Discover!* Price List, and the STN User Documentation Order Form.

In case you missed it:

STNews Sep/Oct

- New capabilities for accessing, analyzing, visualizing, and post-processing data
- Searching patent classifications
- Reducing the size of REGISTRY answer sets for crossover to CA or CAPLUS
- Multiple records in CA/CAPLUS for documents with many sequences
- Analyzing and grouping data with the Analyze Plus Wizard
- What's this? Help options in STN Easy

STNews Nov/Dec

- 2004 – year in review
- Retrieving structure nodes in rings and chains
- Using thesauri on STN
- Searching for biomedical engineering information in COMPENDEX
- Using the Patent Number Wizard or the Patent Search Assistant

You can find it easily by searching the CAS web site at:
www.cas.org/websearch.html

In Japan

STN
c/o Japan Association for International
Chemical Information (JAICI)
Nakai Building
6-25-4 Honkomagome, Bunkyo-ku
Tokyo 113-0021, Japan
Phone: 81 3-5978-3601 (Technical Service)
Phone: 81 3-5978-3621 (Customer Service)
Fax: 81 3-5978-3600
E-mail: helpdesk@jaici.or.jp (Technical Service)
E-mail: cas-stn@jaici.or.jp (Customer Service)
Internet: www.jaici.or.jp

STN
c/o Japan Science and Technology
Agency (JST)
5-3 Yonbancho, Chiyoda-ku
Tokyo 102-8666, Japan
Phone: 81 3-5214-8402
Fax: 81 3-5214-8420
E-mail: helpdesk@mr.jst.go.jp
Internet: pr.jst.go.jp/db/STN/

In Europe

STN
c/o FIZ Karlsruhe
P.O. Box 2465
76012 Karlsruhe
Germany
Phone: 49 7247/808-555
Fax: 49 7247/808-259
E-mail: helpdesk@fiz-karlsruhe.de
Internet: www.stn-international.de

In North America

STN
c/o Chemical Abstracts Service
P.O. Box 3012
Columbus, Ohio 43210-0012 U.S.A.
Phone: 800-753-4227 (North America)
614-447-3700 (worldwide)
Fax: 614-447-3751
E-mail: help@cas.org
Internet: www.cas.org/stn.html



A division of the
American
Chemical Society.