



Chemical Abstracts Service
provides access to
STN in North America

March/April 2005

STN News

CODEN: STNWEQ ISSN: 1040-1229 Vol. 21 No. 2

North American Edition

STN[®]

Highlights

- 2 Utilizing full-text patent databases on STN**
- 8 New databases on STN: GBFULL and PATDPASPC**
- 13 Strategies for searching cyclic organometallic and coordination compounds in CAS RegistrySM**
- 14 Retrieving cyclic organometallic and coordination compounds in MARPAT[®]**
- 16 Substituting manual steps for automated structure searches with CASLINK**
- 17 Monitoring new inventions with INPADOC**

Utilizing full-text patent databases on STN

Full-text patent databases on STN offer valuable information. Utilizing the features and content in these databases can help you conduct in-depth searches of a broad range of patent information.

This article covers:

- Full-text patent databases available on STN
- Searching full-text patent databases
- Display features available for full-text patent databases

Full-text patent databases available on STN

STN's comprehensive collection of full-text patent databases boasts both international and national coverage.

Database clusters

Database clusters on STN are predefined groups of databases that contain similar content and search parameters. Database clusters allow you to search multiple databases at the same time with the same query.

To assist you with searching full-text patent databases, all of the databases listed in the following tables are included in the PNTTEXT database cluster.

For a complete list of database clusters and the databases contained in each, enter HELP CLUSTER at any arrow prompt (=>) during an STN session or visit:

www.cas.org/ONLINE/CATALOG/CLUSTERS/cover.html

International coverage

Database	Content/Coverage	Searchable data	Tips/Benefits
EPFULL (European Patents FULLtext)	Full text of European patent applications and granted European patents from 1978 to the present and bibliographic records for Patent Cooperation Treaty (PCT) applications transferred to the European Patent Office (EPO)	<ul style="list-style-type: none"> • Patent, application, priority, and related patent information, abstracts, detailed descriptions, and claims • Titles and claims in English, French, or German (EPO's official languages) • Abstracts in the original publication language for all A-documents (published unexamined applications) • English abstracts for German and French documents 	<ul style="list-style-type: none"> • All data featuring the same application number are grouped into one record. • The complete specification is given in English, German, or French for A-documents from 1987 to the present and examined granted patents (B-documents) from 1991 to the present. • Bibliographic and legal status data correspond to the <i>European Patent Bulletin</i>.
PCTFULL (Patent Cooperation Treaty FULLtext)	Full text of PCT published applications issued under the auspices of the World Intellectual Property Organization (WIPO) from 1978 to the present	<ul style="list-style-type: none"> • Full text of the complete document, including the specification and claims, titles, abstracts, patent assignees, inventors, and patent and priority application data 	<ul style="list-style-type: none"> • A single PCT application can be designated as valid in any or all of the 122 member states. • Images or patent drawings are included in TIFF format, when available (currently over 500,000).
RDISCLOSURE (Research Disclosure)	Full text and images of technical disclosures of inventions published as an alternative to the patent system from 1960 to the present	<ul style="list-style-type: none"> • Full text of the disclosure, including the title, a detailed description and illustrations of the invention, and a statement as to whether the invention is disclosed anonymously or by company name 	<ul style="list-style-type: none"> • The inventions described are included in the state of the art, preventing them from being legally patented by a later applicant. • Page images of the complete records, including all illustrations, can be displayed in TIFF format.

National coverage

Database	Content/Coverage	Searchable data	Tips/Benefits
FRFULL (French Patents FULL Text)	Full text of patent applications published in France from 1980 to the present	<ul style="list-style-type: none"> Text of the complete document, including claims and detailed description, patent applicants, inventors, and patent and priority application data Abstracts (since 1996) and titles in English and French 	<ul style="list-style-type: none"> Used with the bibliographic database FRANCEPAT, STN offers a convenient way of searching French patents using English terminology.
GBFULL (United Kingdom (GB) Patents FULL Text)	Full text of patent applications published in the United Kingdom from 1979 to the present	<ul style="list-style-type: none"> Text of the complete document, including claims and detailed description, patent applicants and inventors, and patent and priority application data Abstracts for approximately 85% of the records 	<ul style="list-style-type: none"> Nearly 25% of British applications are not published elsewhere.
PATDPAFULL (PATentdatenbank des Deutsches Patent- und MarkenAmt, FULL Text)	Full text of German patent applications from 1987 to the present, granted patents from 1987 to the present, translations of European patent documents (T2, T3, T4 documents) from 1992 to the present, and German utility models 1999 to the present (no description, only claims), filed at the German Patent and Trademark Office	<ul style="list-style-type: none"> German patent applications and granted patents and European patent documents including patent data, abstracts, all claims, and the full text of the description German utility models containing only claims 	<ul style="list-style-type: none"> EP and PCT applications filed in German are not published again and are not included in PATDPAFULL. To find all patents relevant to Germany, conduct a multifile search of EPFULL, PATDPAFULL, and PCTFULL in German language.
USPATFULL (U.S. Patents Original Publications)	Full text and the current classifications for the original publication of patents issued by the U.S. Patent and Trademark Office from 1971 to the present, with partial coverage of selected technologies from 1971-1974, and defensive publications from 1976 to the present. Coverage includes granted utility patents, defensive publications, design patents, reissue patents, statutory invention registrations, plant patents, and U.S. applications published since January 2001	<ul style="list-style-type: none"> CAS Registry Numbers®, cited references, descriptive full text, index terms, and patent information Patent publication history, listing all levels of subsequent publications Complete <i>Chemical Abstracts</i> indexing for one equivalent chemical patent, when available 	<ul style="list-style-type: none"> A thesaurus is available for the USPTO Manual of Classifications and for the 1st-7th editions of the WIPO manual of the International Patent Classification (IPC) codes. For publications issued since 1999, the complete document, including graphics such as tables, diagrams, or structures, can be displayed as TIFF images.
USPAT2 (U.S. Patents Latest Publications)	Full-text records for the latest publications, since 2001, on inventions for which the original publications are available in USPATFULL		<ul style="list-style-type: none"> USPAT2 is a companion database to USPATFULL.

Searching full-text patent databases

Using the appropriate search tools and techniques to retrieve information ensures complete and accurate results. This section covers:

- Searching the appropriate field
- Utilizing simultaneous left and right truncation
- Using proximity operators

Searching the appropriate field

Using the Basic Index (/BI) field allows you to search the full text of the patent document, abstract, and title. In general, you should use proximity operators (see below) when searching the /BI field of full-text databases. You may alternatively restrict your search to the claims only or abstract only.

Field	Field Code	Content
Basic	/BI (optional)	Single words from the title, abstract, claims, and description fields
Claims	/CLM	Single words from the claims
Abstract	/AB	Single words from the abstract

Utilizing simultaneous left and right truncation

Simultaneous left and right truncation (SLART) allows you to search using wildcards and truncation on both sides of a search term. This enables you to locate multiple variations of a word or phrase, achieving a greater degree of recall in your searches.

SLART is available in the Basic Index (/BI) for all full-text patent databases. SLART is also available in the Claims (/CLM) field in EPFULL.

Note: When using SLART, you must include at least four characters to create the stem of a word.

Using simultaneous left and right truncation in USPATFULL.

```
=> FILE USPATFULL
=> S ACYCLIN?
L1          5 ACYCLIN?
=> S ?ACYCLIN?
L2         34734 ?ACYCLIN?
```

Display features available for full-text patent databases

STN offers a variety of display features to help you view current and comprehensive patent information.

This section covers:

- Estimating the length of the text
- Displaying legal status data
- Browsing through an answer set

Using proximity operators

The meaning of proximity operators, e.g., (L), (P), (S), is database-specific and depends on the database structure, e.g., whether one database record contains one or more publications.

For example, USPATFULL contains only one publication per record, so no proximity operator must be reserved to search two terms in the same publication.

In other databases that contain more than one publication per record, the (L)-proximity operator must be used to search two terms in the same publication. In these databases, the (S)-proximity operator is used to search two terms in the whole text paragraph, not in a sentence of a text paragraph as it is in USPATFULL.

To find the meaning of (L), (P), or (S) in a specific database, use the HELP command, e.g., HELP (P) or ? (P).

Estimating the length of the text

The full text of a patent may be very long. To estimate the length of the text, use the Number of Detailed Description (/DETN) search and display field. /DETN outlines the number of paragraphs in the description or you can use the FREE (TRIAL) display format to determine the availability of full-text fields and the number of claims and paragraphs in the description. FREE (TRIAL) also includes the /DETN field.

Displaying the FREE (TRIAL) format to determine the length of an FRFULL record and what full-text fields are available.

```
=> D TRIAL
L1  ANSWER 1 OF 14960 FRFULL  COPYRIGHT 2005
    Univentio on STN
FRA1 FRFULL ED 20050303 EW 200508
TIEN METHOD OF FORMATION OF A VISIBLE SIGNAL CODES
    ACCORDING TO A FORMAT RETURN A ZERO OR NOT RETURN
    A ZERO
TIFR METHODE DE FORMATION D'UN SIGNAL OPTIQUE CODE
    SUIVANT UN FORMAT RETOUR A ZERO OU NON RETOUR A ZERO
FA  ABEN; ABFR; AI; CLM; DETD; DT; ICM; IN; LA; LAF;
    PA; PI; PRAI; TIEN; TIFR
DETN 77
CLMN 11
```

Displaying legal status data

Legal status information from INPADOC is available in EPFULL, FRFULL, GBFULL, PATDPAFULL, and PCTFULL. The legal status data are contained in the Legal Status (LS) and Legal Status, detailed version with display headers (LS2) custom display fields. Legal status data from INPADOC are not included in any predefined display format.

Legal Status data from INPADOC in a PCTFULL record.

=> D BIB LS

```
L1 ANSWER 1 OF 13 PCTFULL COPYRIGHT 2005 Univentio on STN
Full Text
AN 2004096927 PCTFULL ED 20041117 EW 200446
TIEN POLYANHYDRIDES, PROCESS FOR THE PREPARATION, USE IN
ANTIFOULING PAINT AND ANTIFOULING PAINT CONTAINING
POLYANHYDRIDES
TIFR POLYANHYDRIDES, LEUR PROCEDE DE PREPARATION, LEUR
UTILISATION DANS DES PEINTURES ANTI-SALISSURES ET
PEINTURES ANTI-SALISSURES CONTENANT DES POLYANHYDRIDES
:
:
PI WO 2004096927 A1 20041111
DS W: AE AG AL AM AT AU AZ BA BB BG BR BW BY BZ
CA CH CN CO CR CU CZ DE DK DM DZ EC EE EG
ES FI GB GD GE GH GM HR HU ID IL IN IS JP
KE KG KP KR KZ LC LK LR LS LT LU LV MA MD
MG MK MN MW MX MZ NA NI NO NZ OM PG PH PL
PT RO RU SC SD SE SG SK SL SY TJ TM TN TR
TT TZ UA UG US UZ VC VN YU ZA ZM ZW
W-U: AE AL AM AT AZ BG BR BY BZ CN CO CR CZ DE
DK EC EE ES FI GE HU JP KE KG KP KR KZ LS
MD MX MZ NI PH PL PT RU SK SL TJ TR TT UA
UG UZ YU
RW (ARIPO): BW GH GM KE LS MW MZ SD SL SZ TZ UG ZM ZW
RW (EAPO): AM AZ BY KG KZ MD RU TJ TM
RW (EPO): AT BE BG CH CY CZ DE DK EE ES FI FR GB GR
HU IE IT LU MC NL PL PT RO SE SI SK TR
RW (OAPI): BF BJ CF CG CI CM GA GN GQ GW ML MR NE SN TD TG
RW-U (OAPI): BF BJ CF CG CI CM GA GN GQ GW ML MR NE SN TD TG
AI WO 2004-NO115 A 20040423
PRAI 2003-2003 1908 20030429
NO 2003-2003 1908 20030429
```

```
LEGAL STATUS INPADOC COPYRIGHT 2005 EPO on STN
AN 2004096927 PCTFULL
20041111 WOAK + DESIGNATED STATES
WO A1
AE AG AL AM AT AU AZ BA BB BG BR BW BY BZ CA CH CN CO
CR CU CZ DE DK DM DZ EC EE EG ES FI GB GD GE GH GM HR
HU ID IL IN IS JP KE KG KP KR KZ LC LK LR LS LT LU LV
MA MD MG MK MN MW MX MZ NA NI NO NZ OM PG PH PL PT RO
RU SC SD SE SG SK SL SY TJ TM TN TR TT TZ UA UG US UZ
VC VN YU ZA ZM ZW
.....20041125
20041111 WOAL + DESIGNATED COUNTRIES FOR REGIONAL PATENTS
WO A1
BW GH GM KE LS MW MZ SD SL SZ TZ UG ZM ZW AM AZ BY KG
KZ MD RU TJ TM AT BE BG CH CY CZ DE DK EE ES FI FR GB
GR HU IE IT LU MC NL PL PT RO SE SI SK TR BF BJ CF CG
CI CM GA GN GQ GW ML MR NE SN TD TG
.....20041125
20050105 WO121 EP: THE EPO HAS BEEN INFORMED BY WIPO
THAT EP WAS DESIGNATED IN THIS
APPLICATION
.....20050107
```


BABS

BEILSTEIN Abstracts

–current-awareness alerts (SDIs) available

BEILSTEIN Abstracts (BABS) has been enhanced with the ability to provide current-awareness alerts (SDIs).

Automatic current-awareness alerts (SDIs) ran after the first update in mid-April 2005.

BABS is updated quarterly. Automatic current-awareness alerts (SDIs) are available every update.

The revised BABS Database Summary Sheet is available at: www.cas.org/ONLINE/DBSS/babsss.html

BEILSTEIN

–updated with more than 60,200 new compounds

More than 60,200 new compounds and current supplementary data for about 37,000 compounds have been added to BEILSTEIN.

Currently, BEILSTEIN contains over 9.1 million organic compounds. Reaction information is available for over 7.9 million substances.

The BEILSTEIN Database Summary Sheet is available at: www.cas.org/ONLINE/DBSS/beilsteinss.html

CASM/CAplusSM

–a change in filing date for U.S. applications affects searching based on application date; current-awareness alerts (SDIs) may be affected; Crossover Key (/CK) search and display field removed

In early April, the U.S. Patent & Trademark Office (USPTO) made a change to the International Common Elements (ICE). The International Patent (PCT) application filing date has replaced the U.S. filing date on patent applications and granted publications.

Effective April 12, 2005, CAS implemented a solution to address this change. To continue to create a patent application number that uniquely identifies a U.S. patent, the U.S. filing year portion of the Patent Application Number (/AP) field is approximated by a table lookup of the application series and sequence number combination. This procedure has been applied to USPAT2/USPATFULL as well.

In most cases, you should have no need to make changes to patent searching. However, if you are using a U.S. application number in your current-awareness search, your current-awareness alerts may be affected.

To ensure that the desired U.S. patents are retrieved when searching U.S. patent application numbers in the Patent Application Number (/AP) field, you should use the character masking symbol ! for the last digit of the year. For example, a search of US2001-204412/AP would match on US2000-204412, US2001-204412,

US2002-204412, US2003-204412, US2004-204412, and US2005-204412. This will ensure that you do not miss any applications; however, it could result in unintended data retrievals.

The Crossover Key (/CK) search and display field has been removed from the CA/CAplus family of databases.

The revised CA/CAplus Database Summary Sheets are available at: www.cas.org/ONLINE/DBSS/cass.html
www.cas.org/ONLINE/DBSS/caplusss.html

CHEMLIST[®]/HCHEMLIST

–TSCA inventory updated

TSCA Inventory Tape information is current through January 18, 2005, as provided by the January 2005 version from NTIS.

The CHEMLIST/HCHEMLIST Database Summary Sheets are available at:

www.cas.org/ONLINE/DBSS/chemlistss.html
www.cas.org/ONLINE/DBSS/hchemlistss.html

EMBASE

The Excerpta Medica database

–database reloaded and enhanced

EMBASE has been reloaded and enhanced. The enhancements include the addition of:

- Sentence (S) proximity searching in the Abstract (/AB) field
- Simultaneous left and right truncation to the Abstract (/AB) and Title (/TI) search fields, as well as the Basic Index (/BI)
- The Entry Date (/ED or /UP) field to the BIB, IBIB, ALL, DALL, and IALL display formats. The following is an example of the Entry Date display field:

```
ED   Entered STN: 20050310
      Last Updated on STN: 20050310
```

- A new URL search and display field, also displayed in the Source (/SO) field. The following example shows the URL search and display field:

```
SO   Dermatology Online Journal, (2004) Vol. 10,
      No. 2, Refs: 16
ISSN: 1087-2108
URL:  http://dermatology.cdlib.org/102/
      case\_presentations/leishmaniasis2/aghaei.html
```

In addition, stop words are no longer utilized in the Basic Index (/BI).

The revised EMBASE Database Summary Sheet is available at: www.cas.org/ONLINE/DBSS/embasess.html

EPFULL

European Patents Full Text

–enhanced with additional patent information and new search and display fields

EPFULL has been enhanced with detailed descriptions that are searchable and additional search and display fields for citations and related patents.

All detailed descriptions are now available for search and display. They are searchable in the Basic Index (/BI).

In addition, referenced patent and non-patent literature, as well as information on related patents, has been added to EPPFULL. This information consists of references from EPA1 and EPA3 search reports. XP reference numbers for non-patent literature are also included.

Related patent information consists of patent applications that are filed after the filing of an initial original application, but before it is issued as a patent, and includes any information that involves similar or related technologies, e.g., information about an inventor that made an improvement to technology that was disclosed in an application filed at an earlier date.

In conjunction with the addition of this information, seven new search fields have been added:

- Referenced Non-Patent Literature (/REN)
- Referenced Patent Country (/RPC)
- Related Application Country (/RLC)
- Related Application Number (/RLN)
- Related Application Type (/RLT)
- Related Patent Country (/RLPC)
- Related Patent Number (/RLPN)

In addition, three new display fields have been added:

- Cited Non-Patent Literature (REN)
- Cited Patent Literature (REP)
- Related Document Information (RLI)

These display fields appear in the BIB, ALL, MAX, BRIEF, and STD display formats.

The revised EPPFULL Database Summary Sheet is available at: www.cas.org/ONLINE/DBSS/epfullss.html

GBFULL

United Kingdom (GB) Patents Full Text

–new full-text patent database available; added to database clusters

United Kingdom (GB) Patents Full Text (GBFULL), a new full-text patent database, is available on STN. GBFULL is produced by Univentio®. GBFULL covers the full text of all science and technology patent applications published in the United Kingdom.

GBFULL records contain the searchable text of the complete patent document, including:

- Abstract (for about 85% of the records)
- Claims
- Detailed description
- Inventor
- Patent applicant
- Patent application data
- Patent assignee
- Priority application data

GBFULL contains the following custom display fields:

- Legal Status (LS)
- Legal Status, detailed version with display headers (LS2)

Both fields display the legal status data from INPADOC for the corresponding GBFULL document and are not contained in any predefined display format.

GBFULL contains more than 395,000 records from 1979 to the present. GBFULL is updated weekly with data searchable online within 4 days after publication. Automatic current-awareness alerts (SDIs) are available weekly (default) or monthly.

Simultaneous left and right truncation is available in the Basic Index (/BI).

NOTE: Univentio converts original United Kingdom patent documents into electronic form through an optical character recognition (OCR) process. Therefore, some characters may be misinterpreted or portions of the text may be incomplete. GBFULL participates in the STN Information Keep & Share Program.

For pricing details, see HELP COST in the database.

GBFULL has been added to the ALLBIB, AUTHORS, CORPSOURCE, ENGINEERING, FULLTEXT, HPATENTS, PATENTS, and PNTTEXT database clusters.

A complete listing of database clusters is available at: www.cas.org/ONLINE/CATALOG/CLUSTERS/cover.html

The GBFULL Database Summary Sheet is included with this issue of *STNews* and is available at: www.cas.org/ONLINE/DBSS/gbfullss.html

INPADOC

International Patent Documentation Center –new display format added

A new display format, ALLO (display previous version of patent record), has been added to INPADOC. The ALLO format displays the previous version of a record and is available for 8 weeks after an update is implemented. This allows you to compare the current version with the previous version of the record, which is particularly helpful when reviewing current-awareness alert results.

Example of the new ALLO display field:

```
L2 ANSWER 2 OF 3719 INPADOC COPYRIGHT 2005 EPO on STN
LEVEL 1
AN 262582529 INPADOC ED 20050217 EW 200507 UP 20050310
UW 200510
TI HEAD MOUNTED UMBRELLA AND MANUFACTURING THE SAME.
IN JAE-BONG YANG
INS YANG JAE-BONG
PA YANG, MAN-HO
PAS YANG MAN HO
TL English
DT Patent
PIT AUAA OPI DOCUMENT
PI AU 2002309309 AA 20031027
AI AU 2002-309309 A 20020607
PRAI AU 2002-48869 A 20020620 (EDPR 20040213)
CN 2002-127567 A 20020625 (EDPR 20040123)
JP 2002-183428 A 20020624 (EDPR 20040226)
KR 2002-19603 A 20020411 (EDPR 20031114)
WO 2002-KR1079 W 20020607 (EDPR 20050217)
SG 2002-3791 A 20020621 (EDPR 20040715)
US 2002-184256 A 20020627 (EDPR 20040123)
ICM (7) A45B011-04
LEVEL 1
AN 262582529 INPADOC ED 20050217 EW 200507
UP 20050217 UW 200507
TI HEAD MOUNTED UMBRELLA AND MANUFACTURING THE SAME.
IN JAE-BONG YANG
INS YANG JAE-BONG
PA YANG, MAN-HO
PAS YANG MAN HO
TL English
DT Patent
PIT AUAA OPI DOCUMENT
PI AU 2002309309 AA 20031027
AI AU 2002-309309 A 20020607
PRAI KR 2002-19603 A 20020411 (EDPR 20031114)
WO 2002-KR1079 W 20020607 (EDPR 20050217)
ICM (7) A45B011-04
```

The revised INPADOC Database Summary Sheet is available at:
www.cas.org/ONLINE/DBSS/inpadocss.html

IPA

International Pharmaceutical Abstracts –copyright line changed

The copyright line for International Pharmaceutical Abstracts (IPA) now reads © 2005 The Thomson Corporation.

The IPA Database Summary Sheet is available at:
www.cas.org/ONLINE/DBSS/ipass.html

KOREAPAT

KOREAN Patent Abstracts –database updated monthly; patent information enhanced

KOREAPAT is now updated monthly instead of quarterly. Automatic current-awareness alerts (SDIs) are also available monthly.

In addition, the patent information in KOREAPAT has been improved, making KOREAPAT records more timely and the coverage more extensive:

- The title of the invention is now translated to English intellectually, allowing supplementary information to be incorporated in the translation of the original title.
- Unexamined Patent Applications (A-documents) and Examined Patents (B-documents) are now included in the same update.
- Records from foreign applications, i.e., any application filed from outside Korea, are now added to KOREAPAT. Unexamined Patents (KR A-documents) from foreign applications published between October 2000 and March 2004, as well as Examined Patents (KR B-documents) from foreign applications published between May 1999 and June 2004, have been added.

For pricing details, see HELP COST in the database.

The revised KOREAPAT Database Summary Sheet is available at:
www.cas.org/ONLINE/DBSS/koreapatss.html

LISA

Library and Information Science Abstracts –added to RFTOOLS database cluster

LISA has been added to the RFTOOLS database cluster.

A complete listing of database clusters is available at:
www.cas.org/ONLINE/CATALOG/CLUSTERS/cover.html

The LISA Database Summary Sheet is available at:
www.cas.org/ONLINE/DBSS/lisass.html

MEDLINE®/LMEDLINE

MEDlars ONLINE/MEDLINE Learning File –databases reloaded

MEDLINE and LMEDLINE have been reloaded and the following enhancements have been made:

- The value NONMEDLINE has been added to the File Segment (/FS) field. Using NONMEDLINE/FS allows you to identify records that are in MEDLINE on STN but are not part of NLM's MEDLINE portion of PubMed.

Example:

```
FS NONMEDLINE; IN-DATA-REVIEW; IN-PROCESS;  
NONINDEXED; Priority Journals
```

- The Source (/SO) field now contains the phrase “electronic publication” for those records for which NLM has supplied an electronic publication date.

Example:

```
SO Science, (2005 Feb 11) 307 (5711) 892-6.  
Electronic Publication: 2005-01-13. Journal  
code: 0404511. ISSN: 1095-9203.
```

Information about changes to the 2005 MeSH is available at:
www.nlm.nih.gov/pubs/techbull/nd04/nd04_mesh.html

The MEDLINE/LMEDLINE Database Summary Sheets are available at:

www.cas.org/ONLINE/DBSS/medliness.html
www.cas.org/ONLINE/DBSS/lmedliness.html

PATDPAFULL

–two new display fields added

PATDPAFULL has been enhanced with two new display fields:

- Legal Status (LS)
- Legal Status, detailed version with display headers (LS2)

Both fields display the legal status data from INPADOC for corresponding PATDPAFULL records and are not contained in any predefined display formats.

Example:

```
AN DE10322434 PATDPAFULL ED 20040304 EW 200410  
TI Zerlegbarer Grill  
IN Erfinder identisch mit Anmelder (IDIN)  
Geng, Thomas, 73207 Plochingen, DE  
PA Geng, Thomas, 73207 Plochingen, DE  
DT Patent  
PIT DEA1 Offenlegungsschrift  
PITX DEA1-020 OFFENLEGUNGSSCHRIFT, VORGEZOGENE  
OFFENLEGUNG  
PI DE 10322434 A1 20040304  
AI DE 2003-10322434 A 20030519  
  
LEGAL STATUS INPADOC COPYRIGHT 2005 EPO on STN  
AN DE10322434 PATDPAFULL  
20040304 DEOAV + APPLICANT AGREED TO THE PUBLICATION  
OF THE UNEXAMINED APPLICATION AS TO  
PARAGRAPH 31 LIT. 2 Z1  
.....20040308  
20040304 DEOM8 + SEARCH REPORT AVAILABLE AS TO  
PARAGRAPH 43 LIT. 1 SENTENCE  
1 PATENT LAW  
.....20040308  
20040422 DE8127 NEW PERSON/NAME/ADDRESS OF THE  
APPLICANT GENG, THOMAS, 73240  
WENDLINGEN, DE  
.....20040422
```

For pricing details, see HELP COST in the database.

The revised PATDPAFULL Database Summary Sheet is available at:
www.cas.org/ONLINE/DBSS/patdpafullss.html

PATDPASPC

German Supplementary Protection Certificates for Drugs and Plant Protecting Agents

–new patent database available; added to database clusters

A new patent database, German Supplementary Protection Certificates for Drugs and Plant Protecting Agents (PATDPASPC), is now available on STN.

Produced by the German Patent and Trademark Office, PATDPASPC contains all German Supplementary Protection Certificates (SPCs) for medicinal or plant protection products.

The substance-oriented database contains SPC applications, as well as granted, rejected, and dropped SPCs. PATDPASPC records contain:

- Chemical names and CAS Registry Numbers of certified and related compounds
- Legal status notes
- Main International Patent Classification (IPC) and IPC version
- Publication number and application date of the associated patent
- SPC application date
- SPC document number
- SPC grant date
- SPC product type
- SPC term
- Trade names

Additional information on the associated patent is displayable from PATDPA using the BIB2 display format, which consists of BIB and SPC information.

PATDPASPC contains 659 SPCs from 1992 to the present. The database is updated intermittently, and automatic current-awareness alerts (SDIs) are not available.

Simultaneous left and right truncation is available in the Basic Index (/BI).

PATDPASPC participates in the STN Information Keep & Share Program.

For pricing details, see HELP COST in the database.

PATDPASPC has been added to the ALLBIB, CASRNS, HPATENTS, and PATENTS database clusters.

A complete listing of database clusters is available at: www.cas.org/ONLINE/CATALOG/CLUSTERS/cover.html

The PATDPASPC Database Summary Sheet is included with this issue of *STNews* and is available at: www.cas.org/ONLINE/DBSS/patdpaspcss.html

REGISTRY/ZREGISTRY

–sequence annotations enhanced; NONPATENT added to document type search field; experimental property tags added; original IDE display format returns

Additional descriptive terms for chemical groups and modifications for nucleotides are now searchable in the Notes (/NTE) field.

This enhanced indexing is included for new sequences that are added to REGISTRY/ZREGISTRY as of mid-January 2005; however, the backfile will not be updated. These changes enrich the sequence descriptions and allow for better searching of groups that were previously only searchable based on their systematic names.

The enhancements include:

- More detail about nucleotide synthetic modifications
- Substitutions described on the carbohydrate portion of nucleotides with uncommon bases

For a table of added terms, visit:

www.cas.org/CASFILES/updates.html

For more information regarding blocking groups and annotations for REGISTRY sequences, visit:

www.cas.org/ONLINE/UG/blocking.pdf

The term NONPATENT has been added to the Document Type (/DT) search field.

Over 2 million substances in REGISTRY have been further enriched with nearly 5 million references or “tags” that point to additional experimental property data. The tags for 186 different properties have bibliographic references that direct you to the original source documents used to build CAplus.

Substances in REGISTRY may have two different types of experimental property data:

- Searchable numeric data for 13 properties with their own search and display fields, as listed on the Database Summary Sheet. The numeric values for these properties are listed in the REGISTRY record.
- Tags for 186 properties (including the 13 currently available) that point to CA references allowing you to link to the full text.

The tagged properties can be spectra, charts, graphs, large tables, or numeric values. The tags point to the literature reference where those data may be found. On an on-going basis, tags will continue to be added to REGISTRY records as new references containing property data are identified.

CA role and document type information were added to the IDE display format in 2004. Now, the CA roles and document type information have been removed from the IDE default display format and a new display format, IDERL, has been added. IDERL contains the CA role and document type information.

Both the IDE and IDERL display formats contain the Entry Date (ED) field.

The revised REGISTRY/ZREGISTRY Database Summary Sheets are available at:

www.cas.org/ONLINE/DBSS/registryss.html

www.cas.org/ONLINE/DBSS/zregistryss.html

TOXCENTERSM

Toxicology Center

–MEDLINE file segment reloaded; copyright line for IPA records in TOXCENTER changed

The MEDLINE file segment of TOXCENTER has been reloaded and the following enhancements have been made:

- The term NONMEDLINE was added to the File Segment (/FS) field. Using NONMEDLINE/FS allows you to identify records that are in MEDLINE on STN but are not part of NLM's MEDLINE portion of PubMed.

Example:

```
FS  NONMEDLINE; IN-DATA-REVIEW; IN-PROCESS;
    NONINDEXED;
    Priority Journals
```

- The Source (/SO) field contains the phrase “electronic publication” for those records for which NLM has supplied an electronic publication date.

Example:

```
SO  Science, (2005 Feb 11) 307 (5711) 892-6.
    Electronic Publication: 2005-01-13.
    Journal code: 0404511. ISSN: 1095-9203.
```

The copyright line for IPA records in TOXCENTER now reads © 2005 The Thomson Corporation.

The TOXCENTER Database Summary Sheet is available at:

www.cas.org/ONLINE/DBSS/toxcenterss.html

USPAT2/USPATFULL

–a change in filing date for U.S. applications affects searching based on application date; current-awareness alerts (SDIs) may be affected

In early April, the U.S. Patent & Trademark Office (USPTO) made a change to the International Common Elements (ICE). The International Patent (PCT) application filing date has replaced the U.S. filing date on patent applications and granted publications.

Effective April 12, 2005, CAS implemented a solution to address this change. To continue to create a patent application number that uniquely identifies a U.S. patent, the U.S. filing year portion of the Patent Application Number (/AP) field is approximated by a table lookup of the application series and sequence number

combination. This procedure has been applied to the CA/CAplus family of databases as well.

In most cases, you should have no need to make changes to patent searching. However, if you are using a U.S. application number in your current-awareness search, the alerts may be affected.

To ensure that the desired U.S. patents are retrieved when searching U.S. patent application numbers in the Patent Application Number (/AP) field, you should use the character masking symbol ! for the last digit of the year. For example, a search of US200!-204412/AP would match on US2000-204412, US2001-204412, US2002-204412, US2003-204412, US2004-204412, and US2005-204412. This will ensure that you do not miss any applications; however, it could result in unintended data retrievals.

The USPAT2 and USPATFULL Database Summary Sheets are available at:

www.cas.org/ONLINE/DBSS/uspat2ss.html

www.cas.org/ONLINE/DBSS/uspatfullss.html

WPIFV/WPIDS/WPINDEX/WPIX

Derwent World Patents Index® databases

–patent coverage expanded

Mexican patents now have five different patent application filing series. While the majority of applications are national filings, there are now a small percentage of regional patent applications filed with four regional offices:

- Jalisco (JL)
- Nuevo Leon (NL)
- Yucatan (YU)
- Guanajuato (GT)

The first of these new publications appeared in WPIFV and WPIDS/WPINDEX/WPIX in February 2005. Number formats are unchanged for the national filings. Standard Derwent formats have been defined for the regional filings.

For more information about Mexican patent coverage, visit:

scientific.thomson.com/support/patents/coverage/latestupdates/mexpatcov/

The WPIFV/WPIDS/WPINDEX/WPIX Database Summary Sheets are available at:

www.cas.org/ONLINE/DBSS/wpifvss.html

www.cas.org/ONLINE/DBSS/wpidsss.html

www.cas.org/ONLINE/DBSS/wpidindexss.html

www.cas.org/ONLINE/DBSS/wpixss.html

Strategies for searching cyclic organometallic and coordination compounds in CAS Registry

A coordination compound is a molecule or ion in which a central atom (usually a metal) is bonded to a group of molecules and/or ions via coordinate bonds. Organometallic compounds are a special category of coordination compounds in which one or more carbon atoms of an organic molecule are directly attached to the central metal atom by either sigma (σ) or pi (π) bonds.

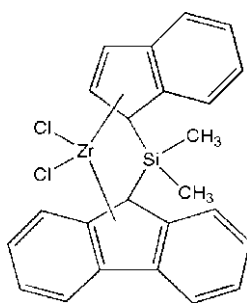
The best overall tip for searching organometallic compounds is to check your structure search strategy with the Help Desk at your local STN Service Center for two reasons:

- The structuring conventions used in REGISTRY for π -bonded systems may differ considerably from those used by chemists for these compounds. In REGISTRY, each carbon atom in the π system is connected to the metal atom. This approach results in structures based on the connectivity of the metal atom rather than on typical coordination numbers derived from the electronic structure of the metal.
- For a comprehensive patent search, you need to conduct your structure search not just in REGISTRY but also in MARPAT and MARPATprevSM. However, in the case of cyclic organometallics, different search strategies are required for searching in these databases.

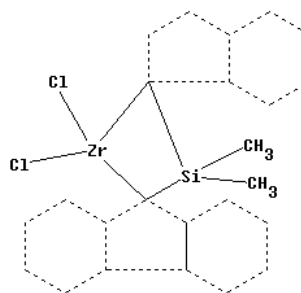
This article illustrates a search strategy for retrieving cyclic organometallic compounds in REGISTRY. Please refer to the Power Up article in this issue of *STNews* for information on the strategy for conducting a search for Markush structures of this type in MARPAT.

The best overall tip for searching organometallic compounds is to check your structure search strategy with the Help Desk at your STN Service Center...

Find specific substances in REGISTRY containing the following substructure:



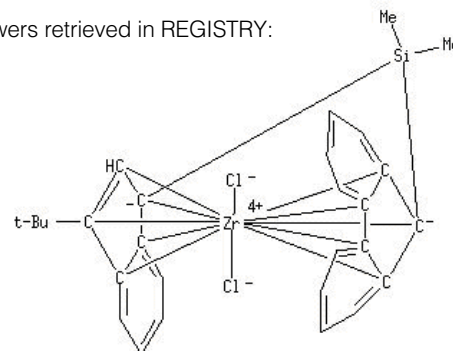
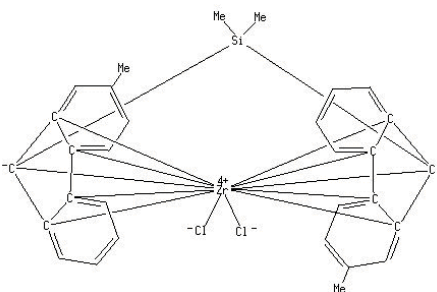
Build the following structure:



Note that:

- Charges are not assigned
- Rings are built with bonds unspecified
- Ring specification is Isolated or Embedded
- Zr is assumed to be in a ring

The following structures are two of the 52 answers retrieved in REGISTRY:



Additional resources

For more information on searching coordination compounds and organometallics in REGISTRY, refer to the archived CAS e-Seminar, *STN: Organometallics and Coordination Compounds*, available at: www.cas.org/training/eseminars/eventdes.html#stnorganometallics

Retrieving cyclic organometallic and coordination compounds in MARPAT

MARPAT is an excellent resource for organometallic and coordination compounds from the world's patent literature.

In most cases, searching in MARPAT does not require any modifications to your structure query. In fact, the CASLINK feature automatically uses the same query in both REGISTRY and MARPAT.

An exception, however, is when an organometallic or coordination compound contains a metal atom in a ring. Since the same queries for these searches will not work in both databases, they must be searched separately and the CASLINK/HCASLINK tools may not be used.

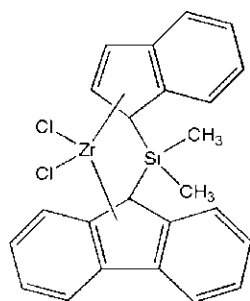
Different query building techniques are required for these types of searches in MARPAT.

Further, it is important to note that the query building technique discussed in the Ask REGgie article in this issue of *STNews* will not retrieve the desired answers in MARPAT.

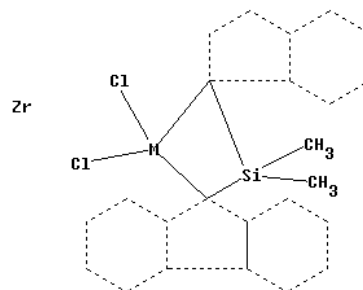
Different query building techniques are required for these types of searches.

These specifications create a query that will retrieve the desired answers. However, due to the way that patents may be worded, you can obtain the best results by also including a separate query consisting only of the ligand.

Find patent records in MARPAT containing these zirconium complexes.



The structure query for MARPAT representing this structure is:



The Zr atom must be designated as a *chain* node.

Building a MARPAT query when a metal is in a ring

To build a query for a metal atom in a ring:

- Use the generic metal representation "M" for any metal in the place of a specific metal in the coordinate ring.
- Use a separate, completely disconnected node for the specific metal atom of interest, e.g., Fe, Al, Ti. For multiple metals, a G-group may be used.
- Set the "M" node to MATCH LEVEL CLASS.
- Set the disconnected metal atom to MATCH LEVEL ATOM.
- No charges should be indicated on the metal atom(s).

A search in MARPAT retrieved 257 answers. Searching the ligand alone (with the zirconium and chlorines removed) retrieved 14 answers that the metal search did not.

Additional Resources

For further information, consult the *MARPAT User Guide* at: www.cas.org/ONLINE/UG/marpatug.pdf

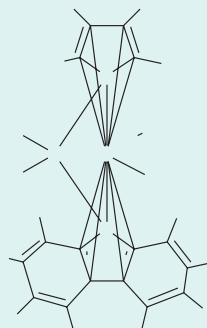
For more information on searching coordination compounds and organometallics, refer to the archived CAS e-Seminar, *STN: Organometallics and Coordination Compounds*, available at: www.cas.org/training/eseminars/eventdes.html#stnorganometallics

A MARPAT record containing the zirconium complexes displayed in the IBIB FQHIT display format.

L4 ANSWER 2 OF 257 MARPAT COPYRIGHT 2005 ACS on STN
ACCESSION NUMBER: 141:278055 MARPAT
TITLE: Manufacture of ethylene copolymers with high content of disubstituted .alpha.-olefins by using metallocene catalysts
INVENTOR(S): Miyoshi, Hiroyuki; Yano, Akihiro
PATENT ASSIGNEE(S): Tosoh Corp., Japan
SOURCE: Jpn. Kokai Tokkyo Koho, 14 pp.
CODEN: JKXXAF
DOCUMENT TYPE: Patent
LANGUAGE: Japanese
FAMILY ACC. NUM. COUNT: 1
PATENT INFORMATION:

PATENT NO.	KIND	DATE	APPLICATION NO.	DATE
JP 2004263050	A2	20040924	JP 2003-54067	20030228
PRIORITY APPLN. INFO.:			JP 2003-54067	20030228

MSTR 1



G1 = chloride
G12 = Zr
G13 = Si
G15 = Me
G3 +G4 = CH=CHCH=CH (SO)
G5 +G6 = CH=CHCH=CH (SO)
MPL: claim 1

Substituting manual steps for automated structure searches with CASLINK

As the Ask REGgie and Power Up articles point out, you cannot take advantage of all the automated steps in CASLINK when different structures are needed for searching REGISTRY and MARPAT. However, you may conduct structure searches and remove duplicate references manually. Just follow the steps outlined in the table.

In this example, the structure "zr.str" refers to the cyclic organometallic structure built for the REGISTRY search in the Ask REGgie article. The structure "zrmarpat.str" refers to the corresponding structure built for the MARPAT search in the Power Up article.

Step	Commands to enter
Build two structures for REGISTRY and MARPAT searching.	Use STN Express or STN on the Web to build structures for uploading to REGISTRY and MARPAT.
Conduct a structure search in REGISTRY (SAMPLE and FULL) on the uploaded structure (L1).	<pre>=> FILE REGISTRY => Uploading C:\CASNC\STN Express\Queries\zr.str L1 STRUCTURE UPLOADED => S L1 L2 6 SEA SSS SAM L1 => S L1 FULL L4 52 SEA SSS FUL L1</pre>
Conduct a search in CAplus for patents in which the CAS Registry Numbers in the answer set L4 were indexed.	<pre>=> FILE CAPLUS => S L4 AND PATENT/DT 107 L4 4662689 PATENT/DT L5 61 L4 AND PATENT/DT</pre>
Conduct a structure search in MARPAT on the uploaded structure (L6).	<pre>=> FILE MARPAT => Uploading C:\CASNC\STN Express\Queries\zrmarpat.str L6 STRUCTURE UPLOADED => S L6 L7 12 SEA SSS SAM L6 => S L6 FULL L9 257 SEA SSS FUL L6</pre>
Conduct a structure search in MARPATprev.	<pre>=> FILE MARPATPREV => S L6 FULL L11 0 SEA SSS FUL L6</pre>
Remove duplicate patents.	<pre>=> FILE MARPAT CAPLUS => DUP REM L9 L5 PROCESSING COMPLETED FOR L9 PROCESSING COMPLETED FOR L5 L12 286 DUP REM L9 L5 (32 DUPLICATES REMOVED) ANSWERS '1-257' FROM FILE MARPAT ANSWERS '258-286' FROM FILE CAPLUS</pre>

Additional resources

For more information about CASLINK, refer to the *Searching CASLINK* Quick Reference Card, available at:
www.cas.org/ONLINE/QR/caslink.pdf

Monitoring new inventions with INPADOC

INPADOC's large and comprehensive collection of bibliographic and legal status data makes it an excellent database for monitoring technologies, inventors, and companies for new inventions.



INPADOC (INternational PATent DOcumentation Center) is an essential patent database on STN for monitoring competitors' patenting activities. In particular, INPADOC's large and comprehensive collection of bibliographic and legal status data makes it an excellent database for monitoring:

- Technologies/inventors/companies for new inventions
- Changes in the legal status
- Patent families for new family members

The database includes:

- Bibliographic and family data for patent documents and utility models from 73 patent-issuing organizations worldwide (1968 to the present)
- Legal status data from 44 patent-issuing organizations worldwide (1978 to the present)

This is the first in a series of articles on monitoring patents with INPADOC. This article focuses on monitoring competitors, including technologies, inventors, and companies.

Content of INPADOC records

Records in INPADOC include:

- Bibliographic information for each publication level, e.g., application, granted patent (defined by a patent kind code, e.g., A1, B1), for one patent application
- Abstract (for selected countries and patent publications)
- Legal status data
- Patent family data that are compiled dynamically when a family display format is requested

The following display formats allow you to locate the information you are looking for:

To display:	Use:
Bibliographic information	D ALL D ALL.M (for all publication levels)
Abstract	D AB
Legal status	D LS
Family data	D FAM*

* See the INPADOC Database Summary Sheet for additional family display formats.

Monitoring technologies, inventors, and companies

In INPADOC, you can easily monitor new technologies in an area of interest by using International Patent Classification codes (IPCs). The following update codes can help you to find new or updated records:

Use this update code:	To monitor:
EDF (Entry Date, Family)	First document in a family
EDP (Entry Date, Patent)	First level of patent publication
ED (Entry Date)	All publication levels
UP (Update Date)	Changes to bibliographic information for any publication level for a patent

What new patent inventions (first in a family) have been reported recently by the European Patent Office (EPO) in the field defined by the IPC A61K?

```

=> FILE INPADOC
=> S A61K/IC AND EP/PC AND EDF>20050301
L1          55 A61K/IC AND EP/PC AND EDF>20050301

=> D 2 ALL
L1 ANSWER 2 OF 55 INPADOC COPYRIGHT 2005 EPO on STN
Full Text

LEVEL 1
AN 265372659 INPADOC ED 20050324 EW 200512 UP 20050324
UW 200512
TI Two-step mascara.
Mascara en deux etapes.
Zweistufiges Mascara.
IN PATEL, LILAVATI; STERPHONE, STACY
INS PATEL LILAVATI; STERPHONE STACY
INA US; US
PA L'OREAL SA
.
.
.
PIT EPA2 PUBL. OF APPLICATION WITHOUT SEARCH REPORT
PI EP 1516612 A2 20050323
DS R: AT BE BG CH CY CZ DE DK EE ES FI FR GB GR HU IE IT
LI LU MC NL PL PT RO SE SI SK TR
AI EP 2004-255652 A 20040917
PRAI US 2003-666368 A 20030919 (EDPR 20050324)
US 2004-759614 A 20040116 (EDPR 20050324)
ICM (7) A61K007-032
ICS (7) A45D033-00

=> D 2 LS
L1 ANSWER 2 OF 55 INPADOC COPYRIGHT 2005 EPO on STN

LEGAL STATUS
AN 265372659 INPADOC
20050323 EPAK + DESIGNATED CONTRACTING STATES:
EP A2
AT BE BG CH CY CZ DE DK EE ES FI FR GB GR
HU IE IT LI LU MC NL PL PT RO SE SI SK TR
.....20050324
20050323 EPAX + EXTENSION OF THE EUROPEAN PATENT TO
AL HR LT LV MK
.....20050324
20050323 EP17P + REQUEST FOR EXAMINATION FILED
20040925
.....20050324

=> D 2 FAM
L1 ANSWER 2 OF 55 INPADOC COPYRIGHT 2005 EPO on STN

PATENT FAMILY INFORMATION
AN 265372659 INPADOC

+-----PRAI-----+ +-----AI-----+
US 2003-666368 A 20030919 EP 2004-255652 A 20040917
US 2004-759614 A 20040116 EP 2004-255652 A 20040917

+-----AI-----+ +-----AI-----+
EP 2004-255652 A 20040917 EP 1516612 A2 20050323

2 priorities, 1 application, 1 publication

```

Enter
INPADOC.

Search the
IPC. Limit
to the EPO
and to recent
family entry
dates (EDF).

Display
bibliographic
data.

Display legal
status data.

Display family
data.

Are there any new patent publications for inventions recently filed by Hewlett Packard?

Search for the patent assignee. Limit to recent entry dates.

```
=> S HEWLETT/PA,PAS AND ED>=20050201
      40559 HEWLETT/PA
      41301 HEWLETT/PAS
      756978 ED>=20050201
            (ED>=20050201)
L2      707 HEWLETT/PA,PAS AND ED>=20050201
```

Use FSORT to group all records by invention.

```
=> FSORT L2
      .
      .
L3      707 FSO L2

      27 Multi-record Families      Answers 1-61
      Family 1                      Answers 1-2
      Family 2                      Answers 3-4
      Family 3                      Answers 5-6
      Family 4                      Answers 7-10
      .
      .
      Family 27                    Answers 60-61
      646 Individual Records        Answers 62-707
      0 Non-patent Records
```

Use the free format TI PIT to verify that answers 3 and 4 belong to the same family. PIT displays the patent publication type.

```
=> D TI PIT 3-4
L3 ANSWER 3 OF 707 INPADOC COPYRIGHT 2005 EPO on STN
   FAMILY DUPLICATE 2
TI Inkjet consumable cartridge with integrated nozzle cap.
PIT USAA PATENT APPLICATION PUBLICATION (PRE-GRANT)

L3 ANSWER 4 OF 707 INPADOC COPYRIGHT 2005 EPO on STN
   FAMILY DUPLICATE 2
TI Inkjet consumable cartridge with integrated nozzle cap.
   Cartouche a jet d'encre consommable avec capuchon
   integre. Einwegtintenstrahlpatrone mit einer
   integrierten Duesenkappe.
PIT EPA1 PUBL. OF APPLICATION WITH SEARCH REPORT
```

Display bibliographic information for one of the family members.

```
=> D ALL 4
L3 ANSWER 4 OF 707 INPADOC COPYRIGHT 2005 EPO on STN
   DUPLICATE 2
Full-text

LEVEL 1
AN 261701299 INPADOC ED 20050211 EW 200506 UP 20050211
   UW 200506
TI Inkjet consumable cartridge with integrated nozzle cap.
   Cartouche a jet d'encre consommable avec capuchon
   .
   .
PAS HEWLETT PACKARD DEVELOPMENT CO
PAA US
TL English; French; German
LA English
DT Patent
PIT EPA1 PUBL. OF APPLICATION WITH SEARCH REPORT
PI EP 1504911 A1 20050209
DS R: AT BE BG CH CY CZ DE DK EE ES FI FR GB GR HU IE IT
   LI LU MC NL PL PT RO SE SI SK TR
AI EP 2004-254641 A 20040802
PRAI US 2003-633619 A 20030805 (EDPR 20050211)
ICM (7) B41J002-175
```

Additional resources

For more information about searching in INPADOC, refer to the INPADOC workshop manual available at: www.stn-international.de/training_center/patents/inpadoc_wm.pdf

The INPADOC Database Summary Sheet is available at: www.cas.org/ONLINE/DBSS/inpadocss.html

Charge Back Code options enhanced



A new Charge Back Code option, Activate for Session, is now available in STN Easy. Activate for Session requires you to enter a Charge Back Code for each session. In conjunction with this enhancement, the name of the former Activate Charge Back Code has been changed to Activate Perm.

After signing on to STN Easy, if you wish to change your Charge Back Code option, click **Preferences** in the left-hand column.

A pull-down menu with the choices Activate for Session, Deactivate, and Activate Perm appears for your use.

The Charge Back Code options are also available at the account level. For details, contact your local STN Service Center.

STNews

STNews is written and produced cooperatively by Chemical Abstracts Service, FIZ Karlsruhe, and JST and printed in three separate editions.

Staff, North American Edition:

Editors: Kristina Gobel, Crystal Poole

Contributing Editors:

Jim Blake, David Connolly, Elizabeth Haines

Design/Production:

Pat Farnlacher, Nadine Seeley

FIZ Karlsruhe

Dr. Gerhard Herlan

JST

Ryosuke Shimamori

For the North American Edition © 2005 American Chemical Society. Quoting or republishing of material from STNews is encouraged provided that acknowledgment is made of STNews as the source. CAS requests that a copy of the reproduced material be sent to CAS Customer Care, P.O. Box 3012, Columbus, OH 43210-0012 U.S.A. Please send all address changes to CAS, P.O. Box 3012, Columbus, OH 43210-0012 U.S.A. E-mail us at help@cas.org.

The Charge Back Code options for an individual STN login ID are:

Charge Back Code option	Description
Activate for Session	A blank Charge to field appears near the Search button each time you log on. The Charge Back Code from your previous session is not pre-filled in the Charge to field. Entering a Charge Back Code is required for each session.
Deactivate	The Charge to field does not appear near the Search button.
Activate Perm	A blank Charge to field appears near the Search button when this option is first selected. In subsequent STN sessions, however, the Charge to field is pre-filled with the Charge Back Code from your previous session.

STN Easy Preferences Page

Your current preferences are displayed for each option. Confirm or select new options, and then click the **Apply** button.

General Settings:

- Change [password](#).
- Set as the default language.
- the charge back code feature. To activate this feature for all users please contact [STN Customer Service](#).

Thomson Derwent on STN training

www.stn-international.com/training_center/workshops/derwent_ws.html

Chicago, Illinois

- 5/5 9:00 a.m.-4:30 p.m. Derwent World Patents Index on STN
5/6 9:00 a.m.-12:00 p.m. DGENE (Derwent Geneseq™) on STN
5/6 1:00 p.m.-4:30 p.m. Competitive Intelligence on STN

Dallas, Texas

- 5/10 9:00 a.m.-4:30 p.m. Derwent World Patents Index on STN
5/11 9:00 a.m.-12:00 p.m. DGENE (Derwent Geneseq) on STN
5/11 1:00 p.m.-4:30 p.m. Competitive Intelligence on STN

New York, New York

- 5/10 9:00 a.m.-4:30 p.m. Derwent World Patents Index on STN
5/11 9:00 a.m.-12:00 p.m. DGENE (Derwent Geneseq) on STN
5/11 1:00 p.m.-4:30 p.m. Competitive Intelligence on STN

Philadelphia, Pennsylvania

- 5/12 9:00 a.m.-4:30 p.m. Derwent World Patents Index on STN
5/13 9:00 a.m.-12:00 p.m. DGENE (Derwent Geneseq) on STN
5/13 1:00 p.m.-4:30 p.m. Competitive Intelligence on STN

San Diego, California

- 5/12 9:00 a.m.-4:30 p.m. Derwent World Patents Index on STN
5/13 9:00 a.m.-12:00 p.m. DGENE (Derwent Geneseq) on STN
5/13 1:00 p.m.-4:30 p.m. Competitive Intelligence on STN

Seattle, Washington

- 5/3 9:00 a.m.-4:30 p.m. Derwent World Patents Index on STN
5/4 9:00 a.m.-12:00 p.m. DGENE (Derwent Geneseq) on STN
5/4 1:00 p.m.-4:30 p.m. Competitive Intelligence on STN

Times listed above reflect the local time for each city.

The workshops are free, but registration is required. For a full description of the workshops, and details about how to register, visit:

thomsonderwent.com/forms/ustrainstn/

2005 CAS exhibits

www.cas.org/exhibit.html

Interphex Japan

May 18-20
Tokyo, Japan

Korea Society for Biochemistry and Molecular Biology Annual Meeting

May 19-20
KOEX, Seoul, Korea

PIUG Annual Conference

May 21-26
Crystal City, Virginia

BioTech Israel

May 24-26
Tel-Aviv, Israel

Canadian Chemical Society Meeting

May 28-June 1
Saskatoon, Saskatchewan, Canada

iExpo

June 1-2
Paris, France

SLA Annual Conference 2005

June 4-9
Toronto, Ontario, Canada

International Conference on Chemical Structures

June 5-9
Noordwijkerhout, The Netherlands

Beyond Genome

June 13-16
San Francisco, California

BIO 2005

June 19-22

Philadelphia, Pennsylvania

South African Online Conference

June 21-23
Pretoria, Gauteng, South Africa

Drug Discovery Technology

August 7-12
Boston, Massachusetts

IFLA '05

August 14-18
Oslo, Norway

ACS Fall 2005

August 28-September 1
Washington, DC

IPO Annual Meeting

September 11-13
Seattle, Washington

GdCh Conference (German Chemical Society Meeting)

September 11-14
Duesseldorf, Germany

PIUG Northeast Workshop

September 28
Iselin, New Jersey

RICH-MAC 2005

October 4-10
Milano, Italy

STNews binders available



Need a binder for your 2005 issues of *STNews*? CAS has *STNews* binders available!

To request your free binders, contact CAS Customer Care at help@cas.org. Be sure to include your name and complete address with your request.

New structure plug-in available for STN® on the WebSM

A new version, v2.0.7, of the structure plug-in for Windows® is available. The update contains an enhancement related to the use of filters when uploading structures. Version 2.0.7 alleviates structure upload failures that may occur when using STN on the Web from a computer that has limited file access permissions.

To download v2.0.7 of the structure plug-in:

1. Visit stnweb.cas.org/.
2. Click **Get Structure Plug-in**.
3. Follow the download instructions.

Note: With some versions of Windows, e.g., XP, you must have permission to modify the Windows Registry to complete the installation of the plug-in. This may require the assistance of your network administrator.

Previously recorded CAS e-Seminars available

Previously recorded CAS e-Seminars are available on the web for your viewing convenience around the clock. Recorded events include both video and audio.

Currently available previously recorded CAS e-Seminars include:

- STN: Organometallics and Coordination Compounds
- STN: Reaction Searching
- STN: Using the Cambridge Scientific Abstract (CSA) Files
- STN: Visualization Tools in STN Express with *Discover!*, Analysis Edition (Version 7.01)
- STN: Post-processing Search Results with the Analysis Edition of STN Express with *Discover!*
- STN: Introduction to Polymers
- STN: Structure and Substructure Searching Tips
- STN: Advanced Structure Search Techniques – Ring Information
- STN: Have It Your Way – Customizing Your STN Account
- STN: “Biotextology” – Text Search Techniques for Biological Information
- STN: Biotech Patent Validity Tips
- STN: Increasing Confidence in Search Results
- STN: Expanding Your Prior Art Search with Controlled Terminology
- STN: All About MARPAT
- STN: Advanced MARPAT Techniques
- STN: Patent Citation Searching
- STN: Searching for Patent Families
- STN: Automating Your Search
- STN: Multiple Methods of Keeping Current

For a description of each CAS e-Seminar or to view one or more, visit:

www.cas.org/training/eseminars/eventlist.html#events

2005 CAS e-Seminars

www.cas.org/training/eseminars/eventlist.html

5/12	8:30-9:30 a.m.	STN: Finding Post-Treated and Blended Polymers
5/31	1:00-2:00 p.m.	STN: Strategies for Finding Novel Formulations
6/9	8:30-9:30 a.m.	STN: Strategies for Finding Novel Formulations
6/28	1:00-2:00 p.m.	STN: Advanced Structure Searching with Filters/Screens
7/14	8:30-9:30 a.m.	STN: Advanced Structure Searching with Filters/Screens
7/26	1:00-2:00 p.m.	STN: Finding Regulatory Information
8/11	8:30-9:30 a.m.	STN: Finding Regulatory Information

All times are U.S. Eastern Time.

For a description of each e-Seminar, visit:
www.cas.org/training/eseminars/eventdes.html

To register, visit:
casevents.webex.com/casevents/onstage/searchecchemical.php?CPRO=STN&CAUD=a1e52027267c

2005 STN instructor-led seminars

www.cas.org/training/schedule.html

Arlington, Virginia

5/22	9:00 a.m.-12:00 p.m.	Structure Searching in CAS Files ¹
5/22	1:00 p.m.-3:00 p.m.	Structure Searching Derwent WPI using STN Express ^{1,2}
5/26	9:00 a.m.-4:00 p.m.	STN Patent Forum

Cambridge, Massachusetts

4/27	9:30 a.m.-11:30 a.m.	STN User Update
4/27	12:30 p.m.-1:30 p.m.	Patent Family Searching on STN
4/27	2:00 p.m.-3:00 p.m.	"Dictionary" searching in REGISTRY
4/27	3:30 p.m.-4:30 p.m.	Advanced Structure Searching Tips

Creve Coeur, Missouri

5/24	9:00 a.m.-12:15 p.m.	STN User Update
------	----------------------	-----------------

Edison, New Jersey

5/4	9:00 a.m.-12:00 p.m.	Basic Patent Search Techniques
5/4	1:00 p.m.-4:00 p.m.	STN Intermediate
5/5	9:00 a.m.-4:00 p.m.	Structure Searching in REGISTRY

¹ Offered in conjunction with the PIUG Annual Conference, exclusively for PIUG members.

² Offered by FIZ Karlsruhe.

All STN instructor-led seminars in North America are free, but registration is required.

To register, visit:
www.cas.org/training/regform.html



CAS Customer Care:

Phone: 800-753-4227 (North America) or 614-447-3700 (worldwide)

CAS:

Phone: 800-848-6538 (North America) or 614-447-3600 (worldwide)

E-mail:

help@cas.org

CAS web page:

www.cas.org

STN web page:

www.cas.org/stn.html

Information Professionals: www.cas.org/infopro/

Patent Information on STN: www.cas.org/patents/

STNews:

www.cas.org/STNEWS/stnewscover.html

STNews back issues:

www.cas.org/STNEWS/backissue.html

In This Issue

Feature

Utilizing full-text patent databases on STN 2

Database News

BABS, BEILSTEIN, CA/CAPLUS, CHEMLIST/HCHEMLIST, EMBASE 7
EPFULL, GBFULL 8
INPADOC, IPA, KOREAPAT, LISA 9
MEDLINE/LMEDLINE, PATDPAFULL 10
PATDPASPC, REGISTRY/ZREGISTRY 11
TOXCENTER, USPAT2/USPATFULL, WPIFV/WPIDS/WPINDEX/WPIX 12

Ask REGgie

Strategies for searching cyclic organometallic and coordination compounds in CAS Registry 13

Power Up

Retrieving cyclic organometallic and coordination compounds in MARPAT 14

Search Tip

Substituting manual steps for automated structure searches with CASLINK 16

Patent Interchange

Monitoring new inventions with INPADOC 17

STN Easystreet

Charge Back Code options enhanced 20

Take Note

Thomson Derwent on STN training 21
2005 CAS exhibits 21
STNews binders available 22
New structure plug-in available for STN on the Web 22
Previously recorded CAS e-Seminars available 22

STN Seminars

2005 CAS e-Seminars 23
2005 STN instructor-led seminars 23

Included with this issue

GBFULL, IFIREF, LIFESCI, NAPRALERT, and PATDPASPC Database Summary Sheets.

In case you missed it:

STNews Nov/Dec

- 2004 – year in review
- Retrieving structure nodes in rings and chains
- Using thesauri on STN
- Searching for biomedical engineering information in COMPENDEX
- Using the Patent Number Wizard or the Patent Search Assistant

STNews Jan/Feb

- CSA databases on STN – opening the world of computing, engineering, water, air, and earth, and materials science to you
- New databases on STN: EPFULL and LISA
- SET it right
- Accessing additional data through hyperlinked terms
- Searching German patents

You can find it easily by searching the CAS web site at:
www.cas.org/websearch.html

In Japan

STN
c/o Japan Association for International
Chemical Information (JAICI)
Nakai Building
6-25-4 Honkomagome, Bunkyo-ku
Tokyo 113-0021, Japan
Phone: 81 3-5978-3601 (Technical Service)
Phone: 81 3-5978-3621 (Customer Service)
Fax: 81 3-5978-3600
E-mail: helpdesk@jaici.or.jp (Technical Service)
E-mail: cas-stn@jaici.or.jp (Customer Service)
Internet: www.jaici.or.jp

STN
c/o Japan Science and Technology
Agency (JST)
5-3 Yonbancho, Chiyoda-ku
Tokyo 102-8666, Japan
Phone: 81 3-5214-8402
Fax: 81 3-5214-8420
E-mail: helpdesk@mr.jst.go.jp
Internet: pr.jst.go.jp/db/STN/

In Europe

STN
c/o FIZ Karlsruhe
P.O. Box 2465
76012 Karlsruhe
Germany
Phone: 49 7247/808-555
Fax: 49 7247/808-259
E-mail: helpdesk@fiz-karlsruhe.de
Internet: www.stn-international.de

In North America

STN
c/o Chemical Abstracts Service
P.O. Box 3012
Columbus, Ohio 43210-0012 U.S.A.
Phone: 800-753-4227 (North America)
614-447-3700 (worldwide)
Fax: 614-447-3751
E-mail: help@cas.org
Internet: www.cas.org/stn.html



A division of the American
Chemical Society.